

CUS30M

(Standard model JST connector)

SPECIFICATIONS

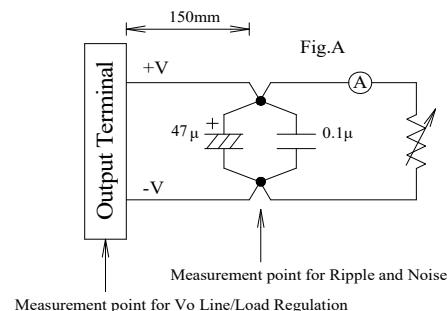
CA851-01-01C

ITEMS		MODEL	CUS30M -12	CUS30M -15	CUS30M -18	CUS30M -24	CUS30M -36	CUS30M -48
1	Nominal Output Voltage	V	12	15	18	24	36	48
2	Maximum Output Current	A	2.5	2	1.7	1.25	0.84	0.63
3	Maximum Output Power	W	30	30	30.6	30	30.24	30.24
4	Efficiency (Typ.)	115/230 VAC (*1)	% 87 / 88	87 / 88	87 / 88	88 / 90	88 / 90	88 / 90
5	Active Average Efficiency related to Erp	115/230 VAC (*1)	% 87 / 87				% 88 / 89	
6	No Load Power Consumption	W	< 0.3 , Ta=25°C, Nominal Input and Output Voltage					
7	Input Voltage Range	(*2)	- 85 - 265 VAC (47-63Hz)					
8	Input Current (Typ.)	115/230 VAC (*1)	A 0.6 / 0.4					
9	Inrush Current (Typ.)	(*1)(*3)	A 30 / 60 at Cold Start					
10	Output Voltage Range	-	Fixed (shipment condition : ±2.5%)					
11	Maximum Ripple & Noise(Ta>0°C/Ta<=0°C)(*1)(*4)(*5)	mV	120 / 200	150 / 200	150 / 200	150 / 200	200 / 300	200 / 300
12	Maximum Ripple & Noise (0%~35% Load)	(*4)(*5)	mV 280 280 280 280 400 480					
13	Maximum Line Regulation	(*4)(*6)	mV 48 60 72 96 144 192					
14	Maximum Load Regulation	(*4)(*7)	mV 120 120 144 192 288 384					
15	Temperature Coefficient	(*4)	- Less than 0.02% / °C					
16	Over Current Protection	(*8)	- >105% of Maximum Output Current . Class 2 limited power source					
17	Over Voltage Protection	(*9)	- Above 115% ~ , shutdown					
18	Hold-up time (Typ.)	115/230 VAC(*1)	ms 20 / 100					
19	Earth Leakage Current	(*10)	- 0.25mA max @265VAC,60Hz					
20	Patient Leakage Current	-	- 100uA max @265VAC , 60Hz , Input to Output					
21	Parallel Operation	-	- No					
22	Series Operation	-	- Possible					
23	Operating Temperature	(*11)	- -20°C ~ +70°C					
24	Operating Humidity	-	- 10 - 90%RH (No condensing)					
25	Storage Temperature	-	- -40°C ~ +85°C					
26	Storage Humidity	-	- 10 - 90%RH (No condensing)					
27	Operating Altitude	-	- 5000m, derating 5°C/1000m above 3000m					
28	Isolation Class / Class of Protection	-	- Class I (L,N,FG) or ClassII (L,N)					
29	Cooling	-	- Convection Cooling					
30	Withstand Voltage	-	- Input-Output : 4kVAC (20mA) 2xMOPP, Input-FG : 2kVAC (20mA) 1xMOPP, Output-FG : 1.5kVAC (20mA) 1xMOPP					
31	Isolation Resistance	-	- More than 100MΩ at 25°C,70%RH, Output - FG : 500VDC					
32	Vibration	-	- At no operating, 10-500Hz (Sweep for 1min.) Maximum 19.6m/s ² X,Y,Z 1 hour each					
33	Shock	-	- Less than 196m/s ²					
34	Safety	-	- Approved by IEC/EN62368-1, UL62368-1, CSA62368-1 Approved by IEC/EN60601-1, ES60601-1, CSA-C22.2 No.60601-1					
35	Pollution	-	- Degree 2, material group 3					
36	EMI	(*1)	- Designed to meet EN55011-B, EN55032-B, FCC-Class B					
37	Immunity	-	- Designed to meet IEC61000-4-2 (Level 4,3), IEC61000-4-3 (Level 3), IEC61000-4-4 (Level 3), IEC61000-4-5 (Level 3,4), IEC61000-4-6 (Level 3), IEC61000-4-8 (Level 4) ,IEC60601-1-2 Ed.4.1, Criteria A SEMI47 (Input Voltage: 200VAC~240VAC)					
38	Line voltage dip	-	- Designed to meet IEC61000-4-11 (Class 3) : Criteria A : 200VAC~240VAC Criteria B : 100VAC~120VAC					
		-	- Designed to meet IEC61000-4-11 (Class 2) : IEC60601-1-2 Ed.4.1 Criteria A : Input Voltage above 120VAC or output below 70% of Maximum Output Current Criteria B : Input Voltage below 120VAC and Output Current more than 70%					
		-	-					
39	Weight (Typ.)	g	65					
40	Size (L x W x H)	inch	3 x 2 x 0.95 (Refer to Outline Drawing)					

*Read instruction manual carefully, before using the power supply unit.

=NOTES=

- *1. At 115VAC/230VAC, Ta=25°C, nominal output voltage and maximum output power.
- *2. For cases where conformance to various safety specs (UL, CSA, EN) are required, input voltage range will be 100 ~ 240VAC (50-60Hz).
Output derating required when Vin is less than 115VAC, refer output derating curve for details.
- *3. Not applicable for the in-rush current to noise filter for less than 0.2ms.
- *4. Please refer to Fig. A for measurement of Vo, line and load regulation and ripple voltage
- *5. Ripple & noise are measured at 20MHz by using a 150mm twisted pair of load wires terminated with a 0.1uF and 47uF capacitor.
- *6. 85~265VAC, constant load.
- *7. No load - full load, constant input voltage.
- *8. Hiccup with automatic recovery. Avoid operating at over load or short circuit condition.
- *9. OVP circuit shut down the output, manual reset (Re power on) to get output voltage.
- *10. Measured by the each measuring method of UL, CSA, and EN (at 60Hz), Ta=25°C.
- *11. Refer to output derating curve for details of output derating versus input voltage, ambient temperature and mounting method .
- Load (%) is percent of maximum output power or maximum output current. Do not exceed its derating of maximum Load
- Maximum load start up at -30°C is possible. However, it may not fulfill all the specifications



CUS30M

OUTPUT DERATING

CA851-01-02B

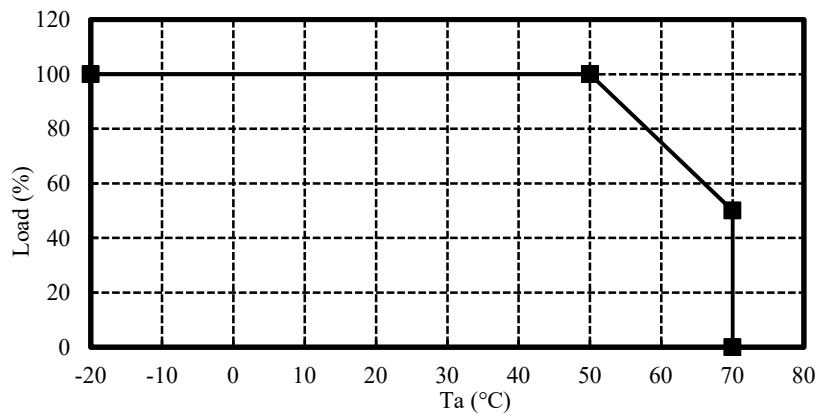
OUTPUT DERATING VERSUS OPERATING AMBIENT TEMPERATURE(Ta)

1. CUS30M-12,-15,-24,-36

* COOLING: CONVECTION COOLING

FOR STANDARD MOUNTING

Ta (°C)	Load (%)
-20 - +50	100
70	50

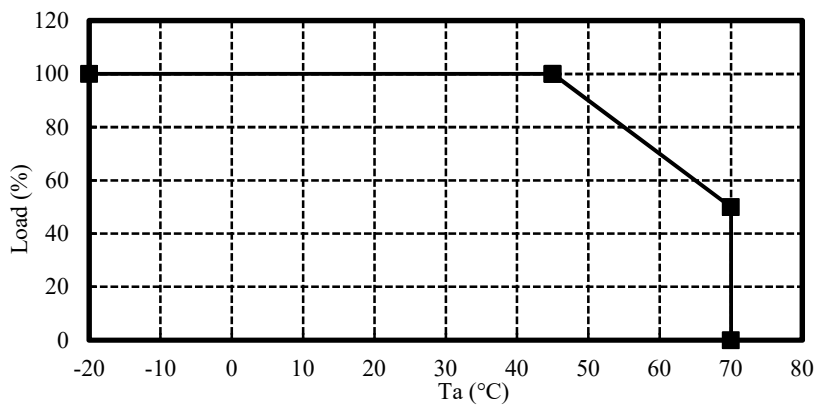


2. CUS30M-18,-48

* COOLING: CONVECTION COOLING

FOR STANDARD MOUNTING

Ta (°C)	Load (%)
-20 - +45	100
70	50



CUS30M

OUTPUT DERATING

CA851-01-03A

OUTPUT DERATING VERSUS INPUT VOLTAGE

CUS30M-12,-15,-18,-24,-36,-48
FOR STANDARD MOUNTING AND ALL MODELS

Input Voltage (VAC)	Load (%)
85	80
115~265	100

