

ZWS100BAF/R

SPECIFICATIONS

A249-01-01/R-A

ITEMS		MODEL	ZWS100BAF -3/R	ZWS100BAF -5/R	ZWS100BAF -12/R	ZWS100BAF -15/R	ZWS100BAF -24/R	ZWS100BAF -48/R	
1	Nominal Output Voltage	V	3.3	5	12	15	24	48	
2	Maximum Output Current	A	20	20	8.5	6.7	4.3	2.1	
3	Maximum Output Power	W	66.0	100.0	102.0	100.5	103.2	100.8	
4	Efficiency (Typ) (*1)	100VAC	%	82	84	86	86	87	88
		200VAC	%	84	86	88	88	89	90
5	Input Voltage Range (*2)	-	85 - 265VAC (47 - 63Hz) or 120 - 370VDC						
6	Input Current (Typ) (*1)	A	0.9/0.45 1.3/0.65						
7	Inrush Current (Typ) (*1)(*3)	-	14A at 100VAC, 28A at 200VAC, Ta=25°C, Cold Start						
8	PFHC	-	Designed to meet IEC61000-3-2						
9	Power Factor (Typ) (*1)	-	0.96/0.89			0.98/0.93			
10	Output Voltage Range	V	2.97 - 3.63	4.5 - 5.5	10.8 - 13.2	13.5 - 16.5	21.6 - 26.4	39.5 - 52.8	
11	Maximum Ripple & Noise (*4)	0≤Ta≤70°C	mV	120	120	150	150	150	200
		-10≤Ta<0°C	mV	160	160	180	180	180	240
12	Maximum Line Regulation (*4)(*5)	mV	20	20	48	60	96	192	
13	Maximum Load Regulation (*4)(*6)	mV	40	40	96	120	150	240	
14	Temperature Coefficient (*4)	-	Less than 0.02% / °C						
15	Over Current Protection (*7)	A	21.0 -	21.0 -	8.93 -	7.04 -	4.52 -	2.21 -	
16	Over Voltage Protection (*8)	V	3.79 - 4.95	5.75 - 7.00	13.8 - 16.2	17.3 - 20.3	27.6 - 32.4	55.2 - 64.8	
17	Hold-up Time (Typ) (*1)	-	20ms						
18	Leakage Current (*9)	-	Less than 0.5mA. 0.2mA(Typ) at 100VAC / 0.4mA(Typ) at 230VAC						
19	Remote Control (*10)	-	Possible						
20	Parallel Operation	-	-						
21	Series Operation	-	Possible						
22	Operating Temperature (*11)	-	Convection : -10 to +70°C (-10 to +50°C:100%, +60°C:75%, +70°C:50%)						
23	Operating Humidity	-	30 to 90%RH (No Condensing)						
24	Storage Temperature	-	-30 to +75°C						
25	Storage Humidity	-	10 to 90%RH (No Condensing)						
26	Cooling	-	Convection Cooling						
27	Withstand Voltage	-	Input - FG : 2kVAC (10mA), Input - Output : 3kVAC (10mA) Output - FG : 500VAC (20mA) for 1min						
28	Isolation Resistance	-	More than 100MΩ at 25°C and 70%RH Output - FG : 500VDC						
29	Vibration	-	At no operating, 10 - 55Hz (Sweep for 1min) 19.6m/s ² Constant, X,Y,Z 1hour each.						
30	Shock	-	Less than 196.1m/s ²						
31	Safety	-	Approved by UL62368-1, CSA62368-1, EN62368-1, UL60950-1, CSA60950-1, EN60950-1 (Expire date of 60950-1 : 20/12/2020), EN50178(OV II) Designed to meet DENAN at 100VAC Only.						
32	Conducted Emission	-	Designed to meet EN55011/EN55032-B, FCC-B, VCCI-B						
33	Radiated Emission	-	Designed to meet EN55011/EN55032-B, FCC-B, VCCI-B						
34	Immunity	-	Designed to meet IEC61000-4-2(Level 2,3), -3(Level 3), -4(Level 3), -5(Level 3,4), -6(Level 3), -8(Level 4), -11						
35	Weight (Typ)	g	290						
36	Size (W x H x D)	mm	62 x 33 x 155 (Refer to Outline Drawing)						

*Read instruction manual carefully, before using the power supply unit.

=NOTES=

*1. At 100VAC/200VAC, Ta=25°C, nominal output voltage and maximum output power.

*2. For cases where conformance to various safety specs (UL, CSA, EN) are required, to be described as 100 - 240VAC(50/60Hz).

*3. Not applicable for the inrush current to Noise Filter for less than 0.2ms.

*4. Please refer to Fig. A for measurement of Vo, line & load regulation and ripple voltage.

*5. 85 - 265VAC, constant load.

*6. No load-Full load, constant input voltage.

*7. 3.3, 5V model: Constant current limit and hiccup with automatic recovery.

12 - 48V model: Constant current limit with automatic recovery.

Avoid to operate at over load or short circuit condition for more than 30seconds.

*8. OVP circuit will shut down output, manual reset (Re power on).

*9. Measured by the each measuring method of UL, CSA, EN and DENAN(at 60Hz), Ta=25°C.

*10. As for Remote control mode, refer to Fig. B.

*11. Output Derating

- Derating at standard mounting. Refer to output derating curve(A249-01-02_).

- When forced air cooling, refer to output derating curve(A249-01-03_).

- Load (%) is percent of maximum output power or maximum output current, whichever is greater.

Fig. A

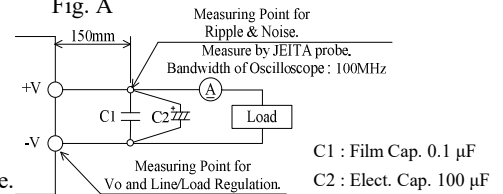
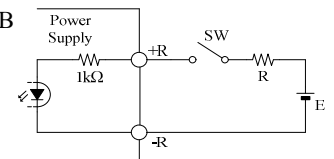


Fig. B



The control mode is shown below.

+R & -R terminal condition	Output condition
SW ON (Higher than 4.5V)	ON
SW OFF (Lower than 0.8V)	OFF

External voltage level : E	External resistance : R
4.5 ~ 12.5VDC	No required
12.5 ~ 24.5VDC	1.5kΩ