

EV1412-0600-A

EVALUATION BOARD

USER GUIDE

Introduction

This user guide describes the evaluation board provided for the FS1412 μ POL™ product.

The board generates an output voltage (V_{OUT}) of 1V for loads of 0–12A from an input voltage (PV_{IN}) of 12V.

Specifications

- Input voltage (PV_{IN}) = +12V
- Output voltage (V_{OUT}) = +1V
- Output load (I_O) = 0–12A
- Switching frequency (F_{SW}) = 1.0MHz
- Output capacitance (C_O) = 4x47 μ F (MLCC)
- Input capacitance (C_{IN}) = 3x22 μ F (MLCC)
- Dimensions (width x length x thickness) = 61mm x 89mm x 1.6mm

Connections

Name	Identifier	Description
PV_{IN}	J1	Input voltage (+12V)
PGnd	J4	Ground for input voltage
V_{OUT}	J3	Output voltage (+1V)
PGnd	J2	Ground for output voltage
V_{IN}	V_{IN}	LDO input voltage
V_{CC}	V_{CC}	Internal supply (V_{CC}) – output of an LDO regulator
PGnd	PGnd	Power ground
En	TP11	Enable
PGood	PGood	Power Good
SCL	J5	I2C/PMBUS clock line
SDA	J5	I2C/PMBUS data line
SALERT	SALERT	SMBALERT#
SYNC	J6	External sync signal
Load	J7	Used to connect load: 20-pin Intel Mini Slammer connector
Output voltage selector	J8	Used to select output voltage before power up
Output transient ripple voltage	J9	Used for measurement: 50 Ω ultra-miniature coaxial connector

The board is configured for a single input supply. An internal low drop-out regulator generates the internal supply (V_{CC}) from V_{IN} . The Enable (En) input is connected to PV_{IN} through a resistor divider, so that no external Enable signal is needed.

Operation

To use the evaluation board:

1. Connect a well-regulated +12V input supply to PV_{IN} (J1) and Gnd (J4).
2. Connect a load of 0–12A to V_{OUT} (J3) and Gnd (J2).

Description

The evaluation board consists of a 4-layer PCB made from FR4 glass-reinforced epoxy laminate material. All layers use 2oz copper (equating to a thickness of 0.0694mm). The major power components, including the FS1412, are mounted on the top side of the board.

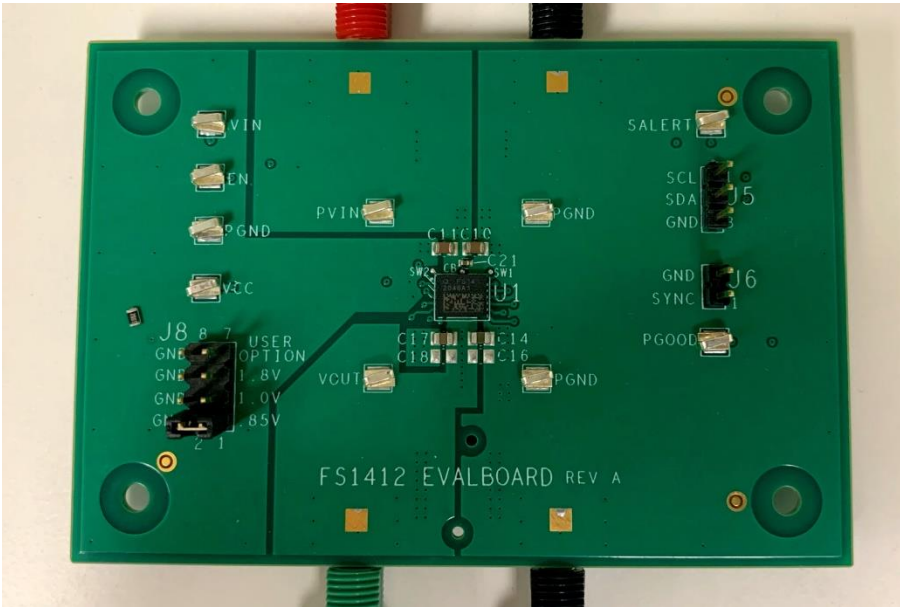


Figure 1 View of board (top)

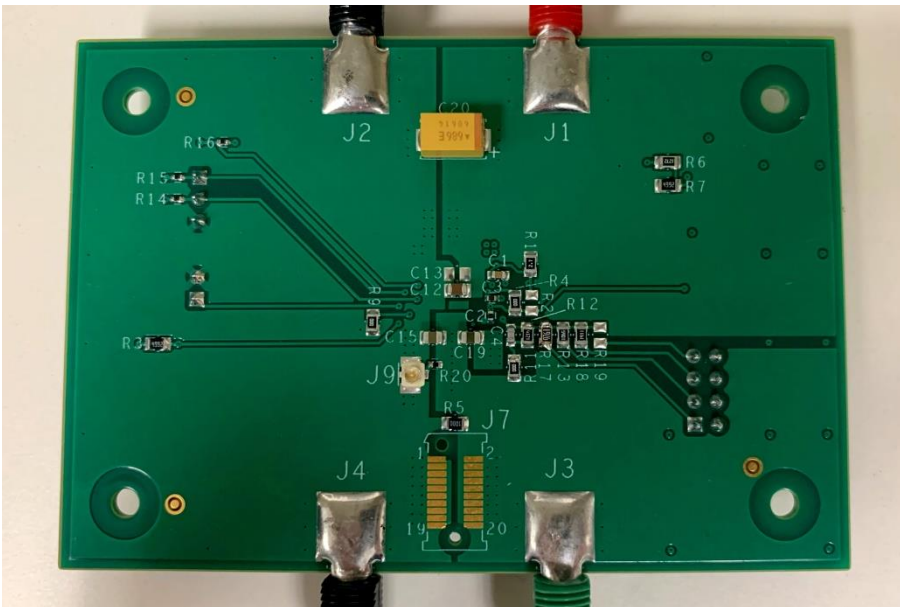


Figure 2 View of board (bottom)

Figure 3 to Figure 6 show the layout of the board layers and Figure 7 shows a schematic of the electrical circuit.

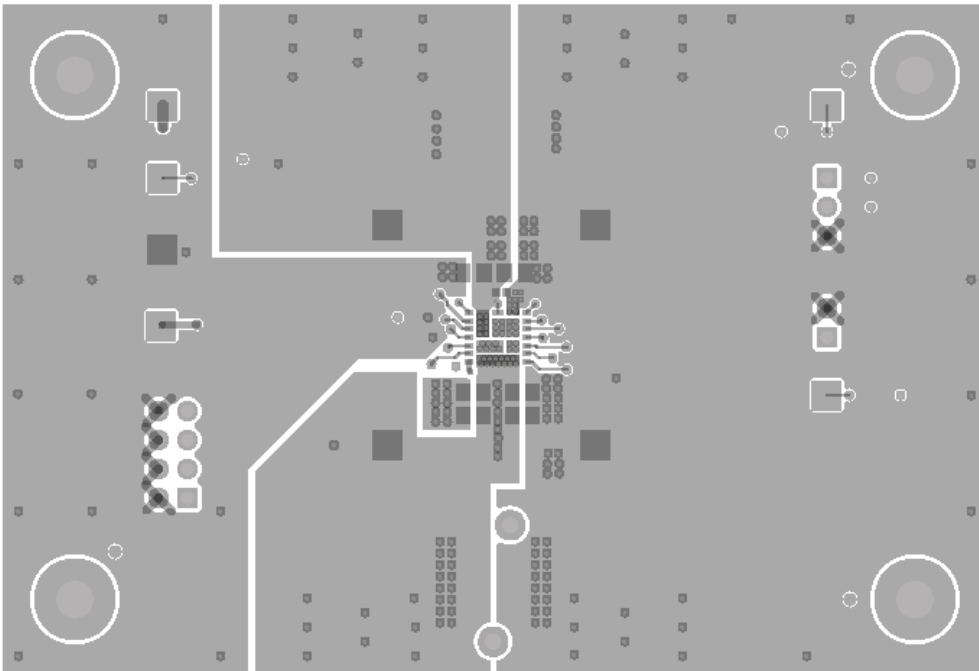


Figure 3 Board layout – layer 1

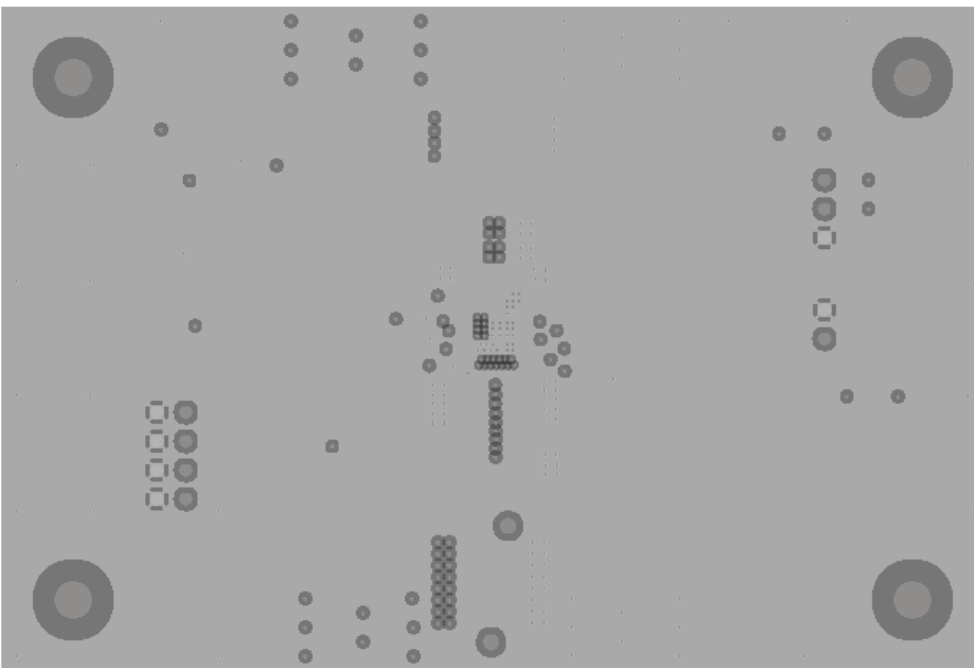


Figure 4 Board layout – layer 2

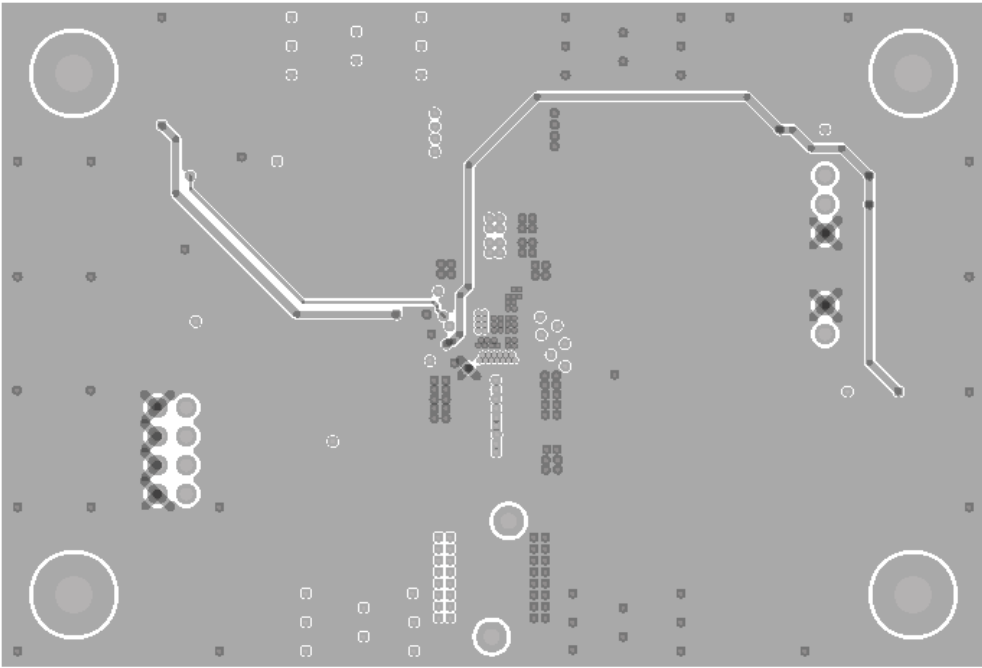


Figure 5 Board layout – layer 3

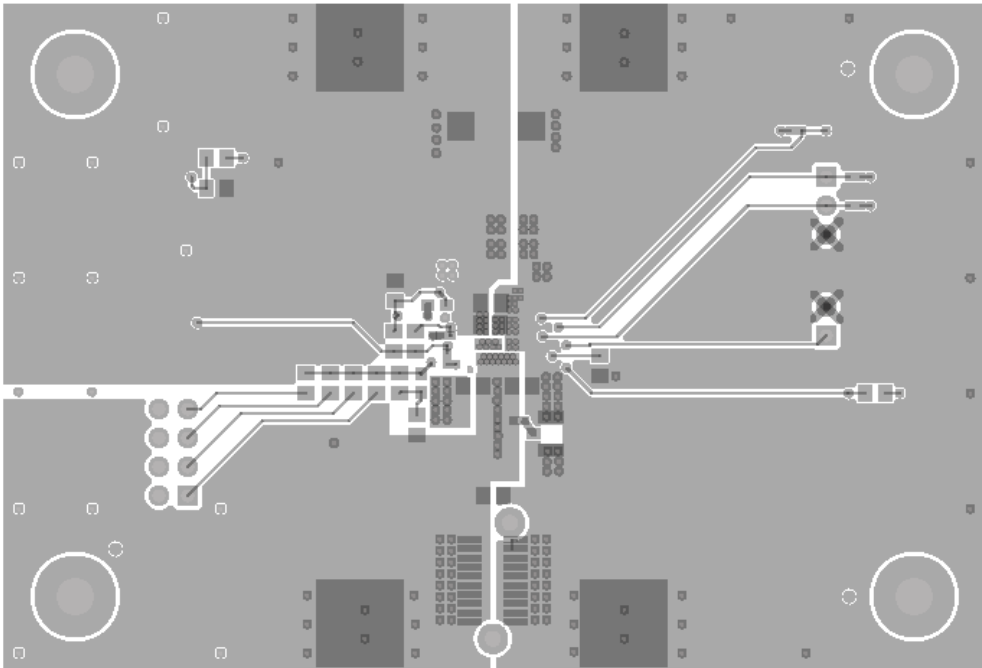


Figure 6 Board layout – layer 4

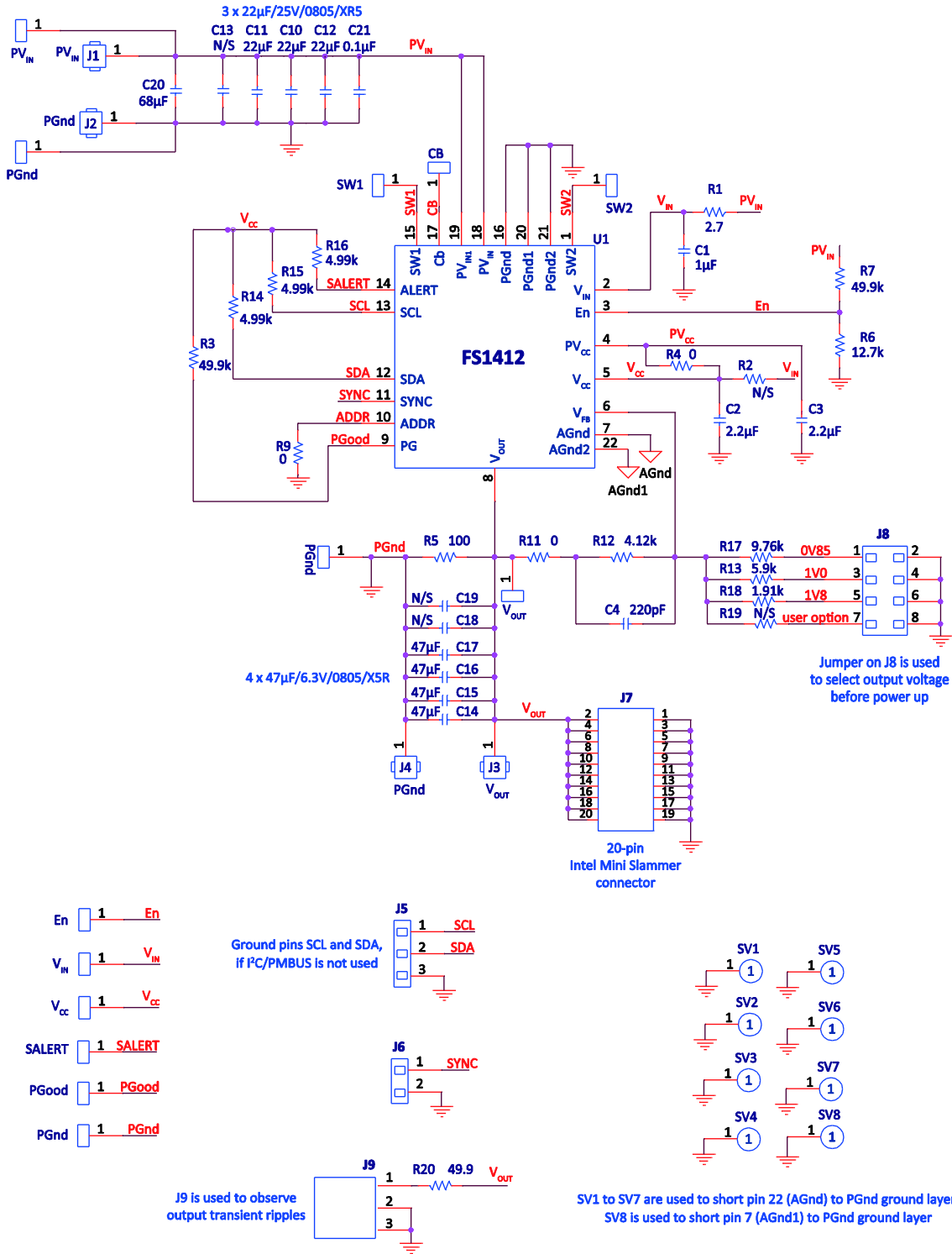


Figure 7 Schematic

Part reference	Quantity	Value	Description	Manufacturer	Part number
C1	1	1 μ F	0603, 25V, X5R		
C10,C11,C12	3	22 μ F	0805, 25V, X5R		
C14,C15,C17,C19	4	47 μ F	0805, 6.3V, X5R		
C2,C3	2	2.2 μ F	0402, 10V, X7S		
C20	1	68 μ F	25V, tantalum		
C21	1	0.1 μ F	0402, 25V, X7R		
C4	1	220pF	0603, COG, 50V		
J1	1	108-0902-001	PV _{IN} banana connector, red	Johnson (Cinch Connectivity Solutions)	108-0902-001
J2,J4	2	108-0903-001	Gnd banana connector, black		108-0903-001
J3	1	108-0904-001	V _{OUT} banana connector, green		108-0904-001
J5	1	68000-103HLF	3 pin header, 0.1" pitch	Amphenol	68000-103HLF
J6	1	68000-102HLF	2 pin header, 0.1" pitch		68000-102HLF
J7	1	Not inserted	Mini Slammer connector, 20-pin	Intel	Q6UJ9A00MS25
J8	1	M20-9760442	Through-board connector, 8-pin, two-row, 0.1" pitch	Harwin	M20-9760442
J9	1	U.FL-R-SMT(10)	50 Ω ultra-miniature coaxial connector	Hirose Electric	U.FL-R-SMT(10)
R1	1	2.7 Ω	0805		
R12	1	4.12k Ω	0805, 1%		
R13	1	5.90k Ω	0805, 1%		
R14,R15,R16	3	4.99k Ω	0402		
R17	1	10k Ω	0805, 1%		
R18	1	1.91k Ω	0805, 1%		
R20	1	49.9 Ω	0402, 1%		
R3,R7	2	49.9k Ω	0805		
R4,R9,R11	3	0	0805		
R5	1	100 Ω	0805		
R6	1	12.7k Ω	0805		
U1	1	FS1412	Main IC	TDK	
VIN, EN, PGND, VCC, PVIN, PGND, VOUT, PGND, SALERT, PGOOD	10	5018	Test points	Keystone	5018

Typical performance

Figure 8 to Figure 18 show typical operating waveforms for the evaluation board, while Figure 19 shows a thermal image of the board in operation. In all cases, the board is operating at room temperature with no airflow; PV_{IN} is 12V, V_{OUT} is 1V and I_O is 0–12A.

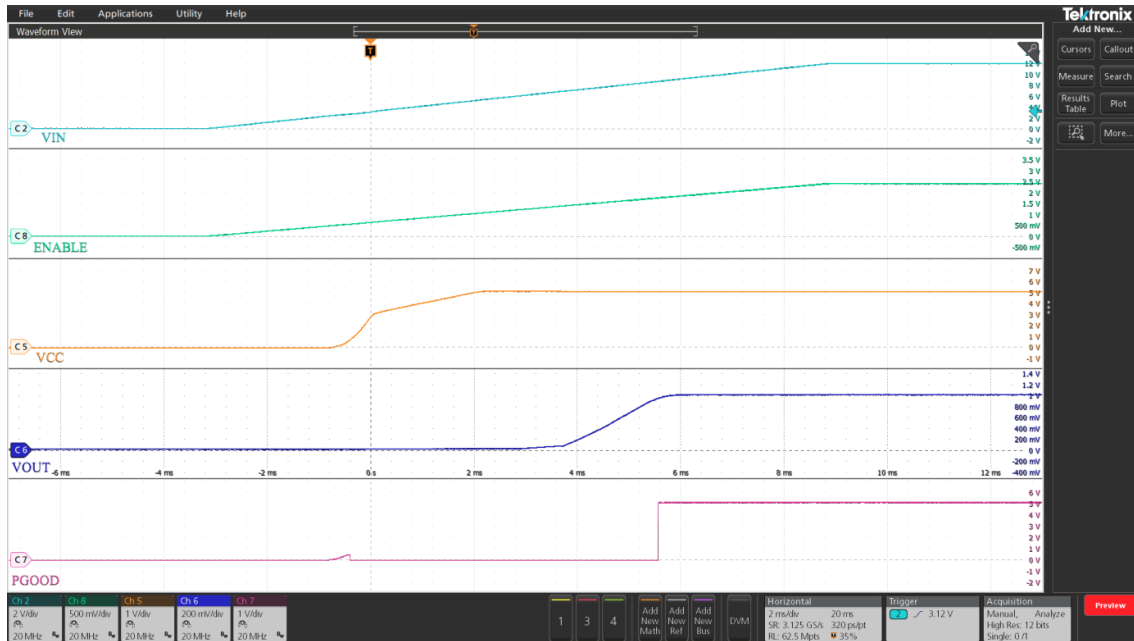


Figure 8 Startup with no load (Ch2:PV_{IN}, Ch5:V_{CC}, Ch6: V_{OUT}, Ch7: PGood, Ch8: Enable)

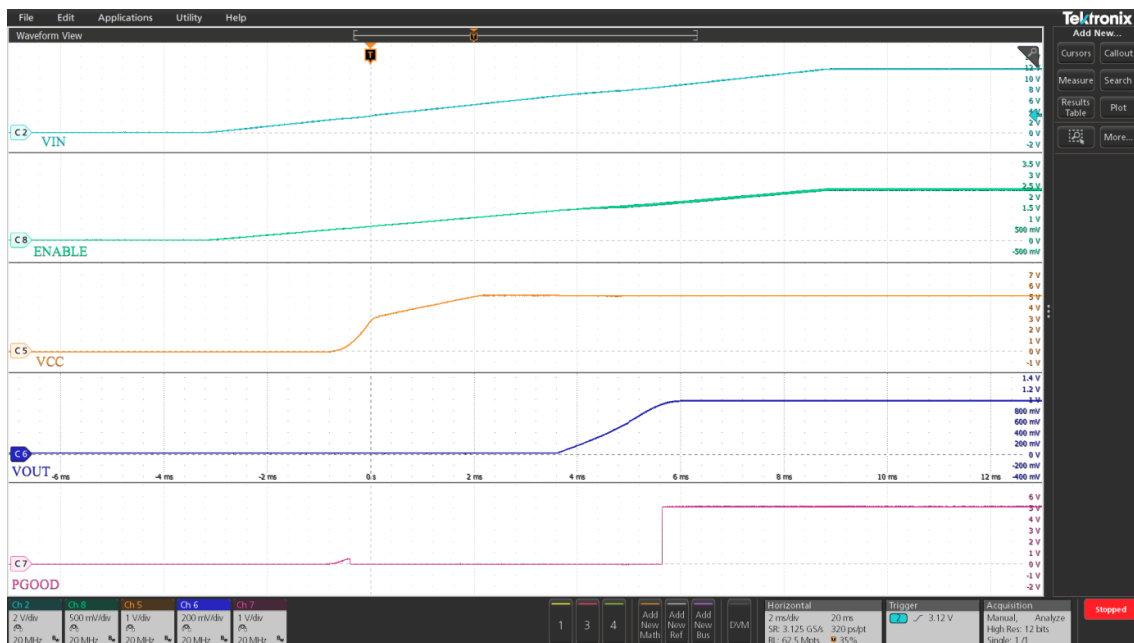


Figure 9 Startup with 12A load (Ch2:PV_{IN}, Ch5:V_{CC}, Ch6: V_{OUT}, Ch7: PGood, Ch8: Enable)

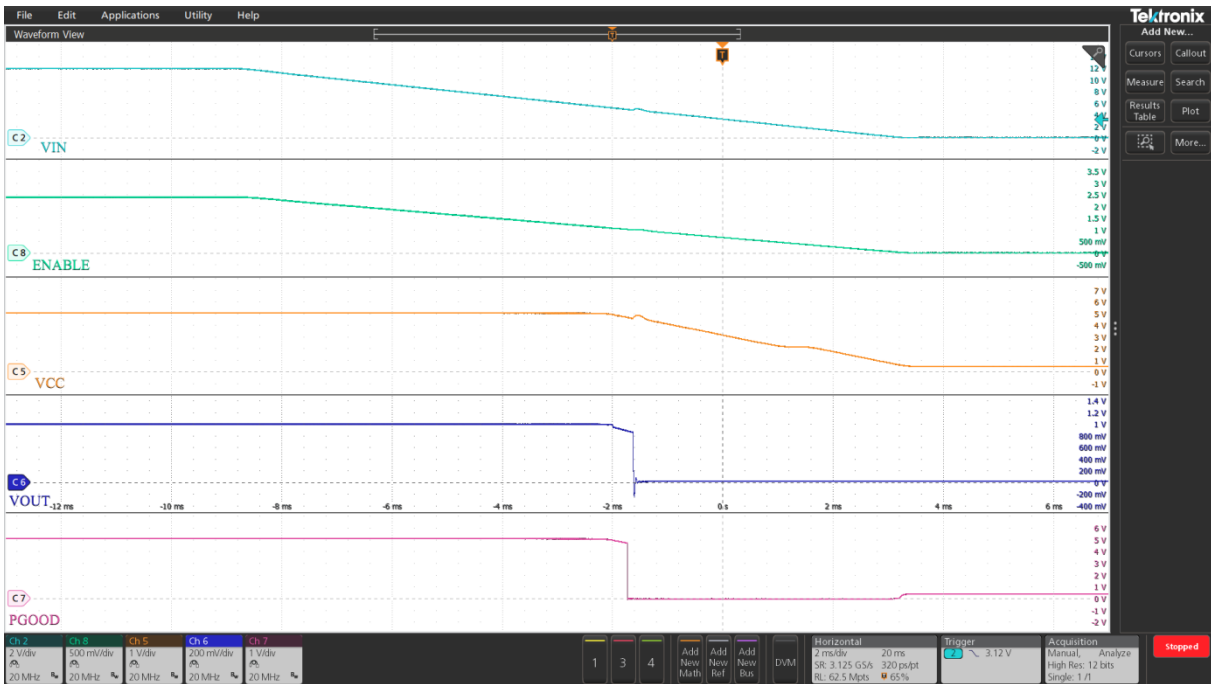


Figure 10 Shutdown with Enable de-assertion at 12A load (Ch2:PV_{IN}, Ch5:V_{CC}, Ch6: V_{OUT}, Ch7: PGood, Ch8: Enable)

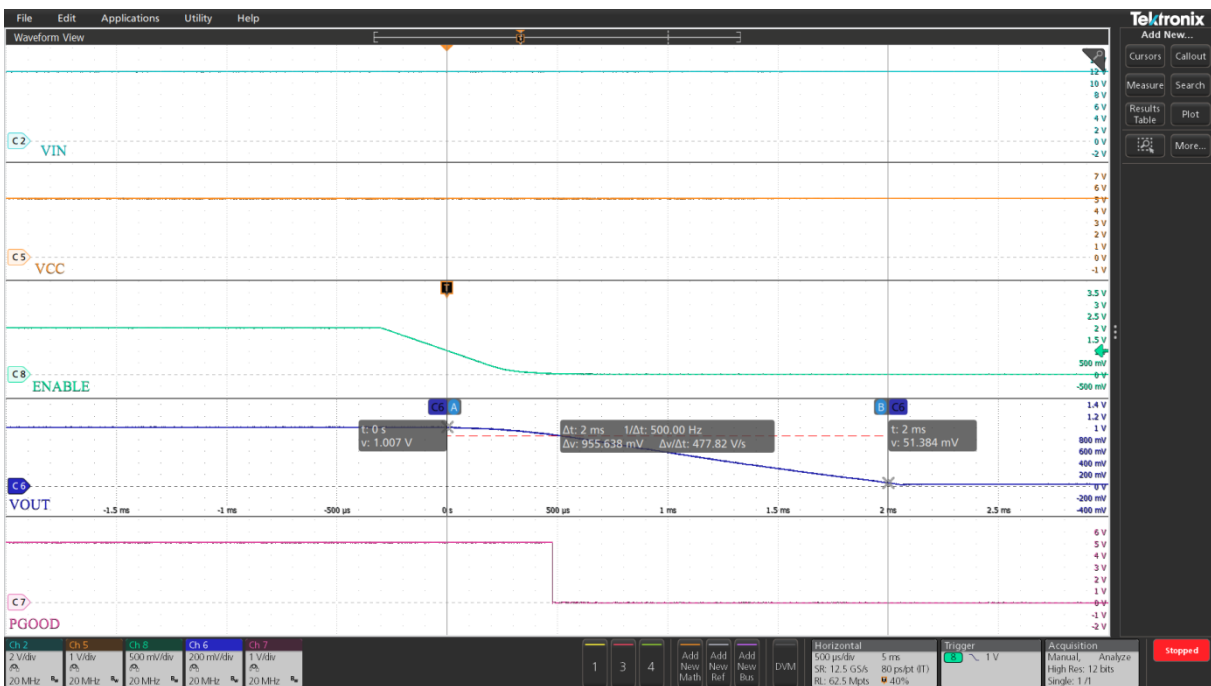


Figure 11 Soft turn off at no load (Ch2:PV_{IN}, Ch5:V_{CC}, Ch6: V_{OUT}, Ch7: PGood, Ch8: Enable)

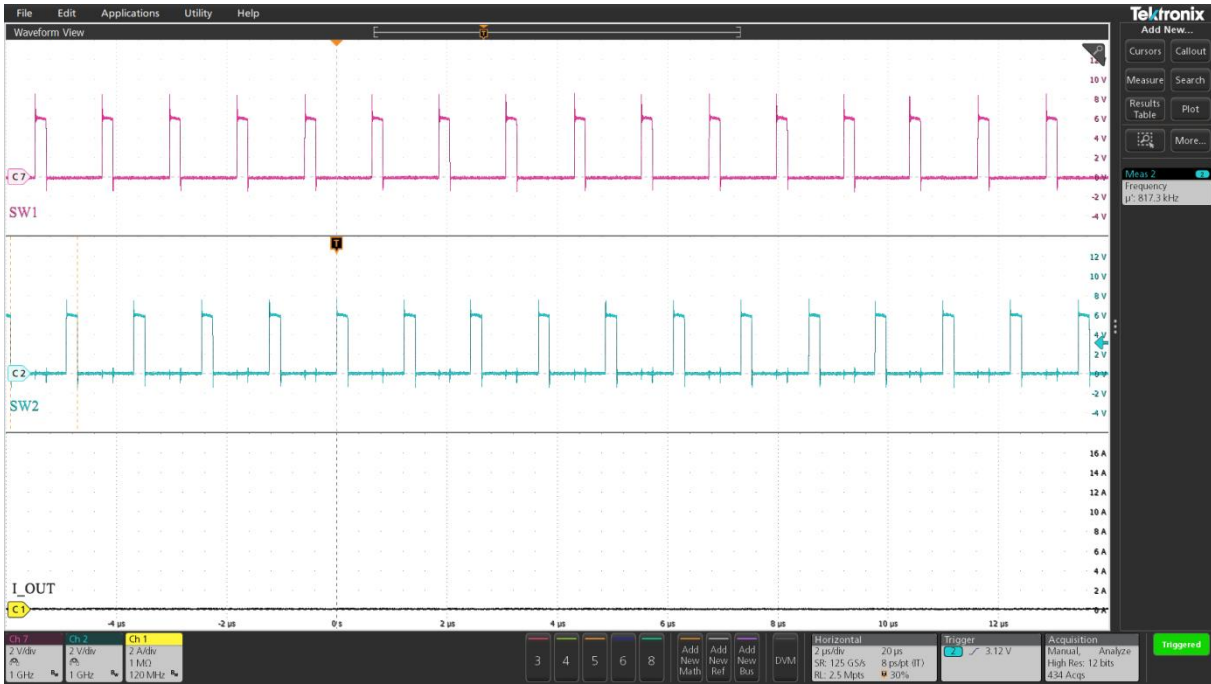


Figure 12 Switch node waveforms at no load

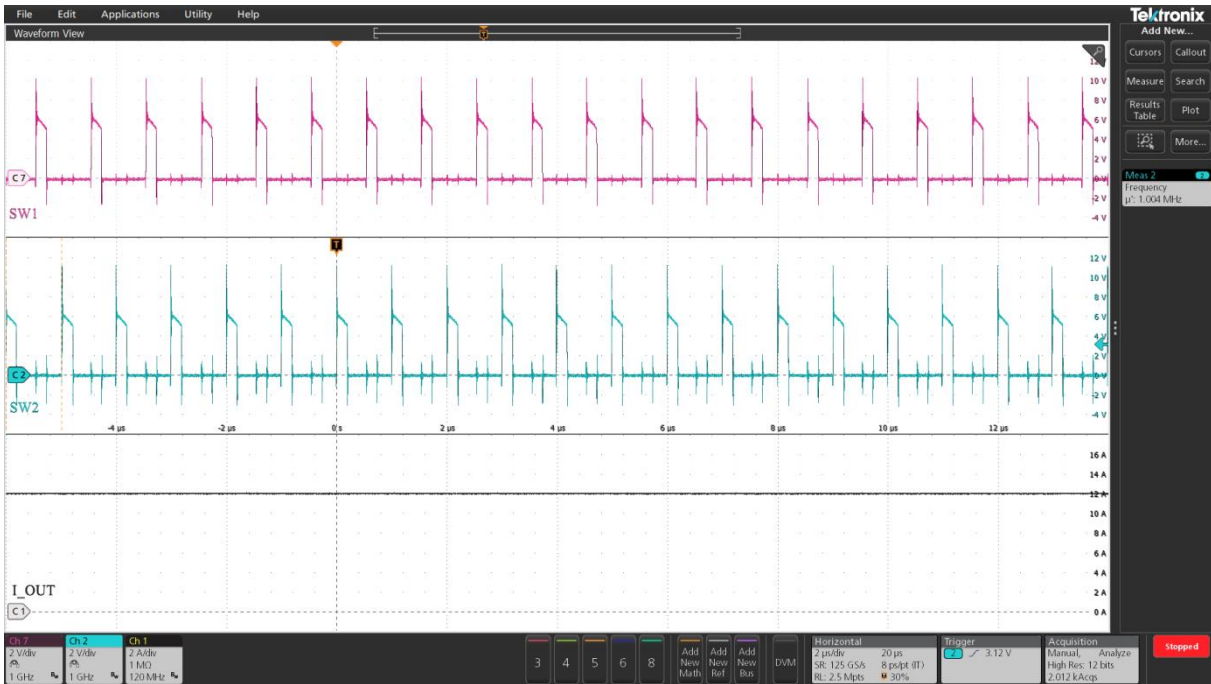


Figure 13 Switch node waveforms at 12A

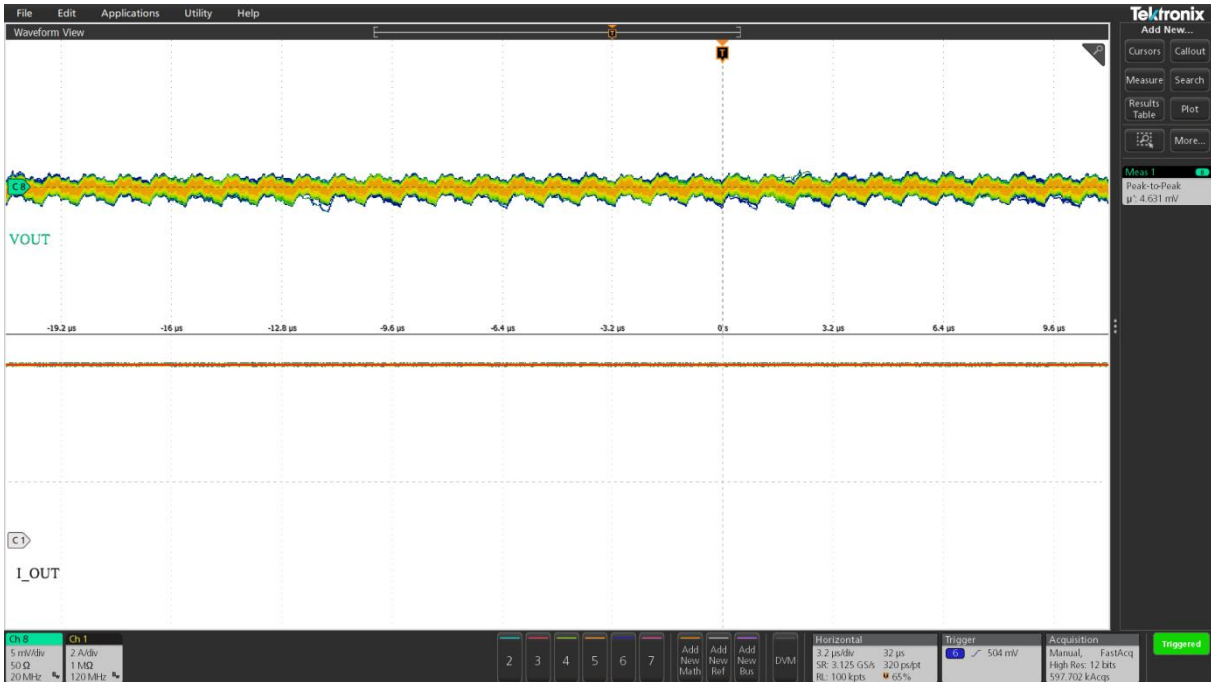


Figure 14 V_o ripple at 12A (Ch1: I_o , Ch8: V_{OUT}), peak-peak V_o ripple = 4.6mV

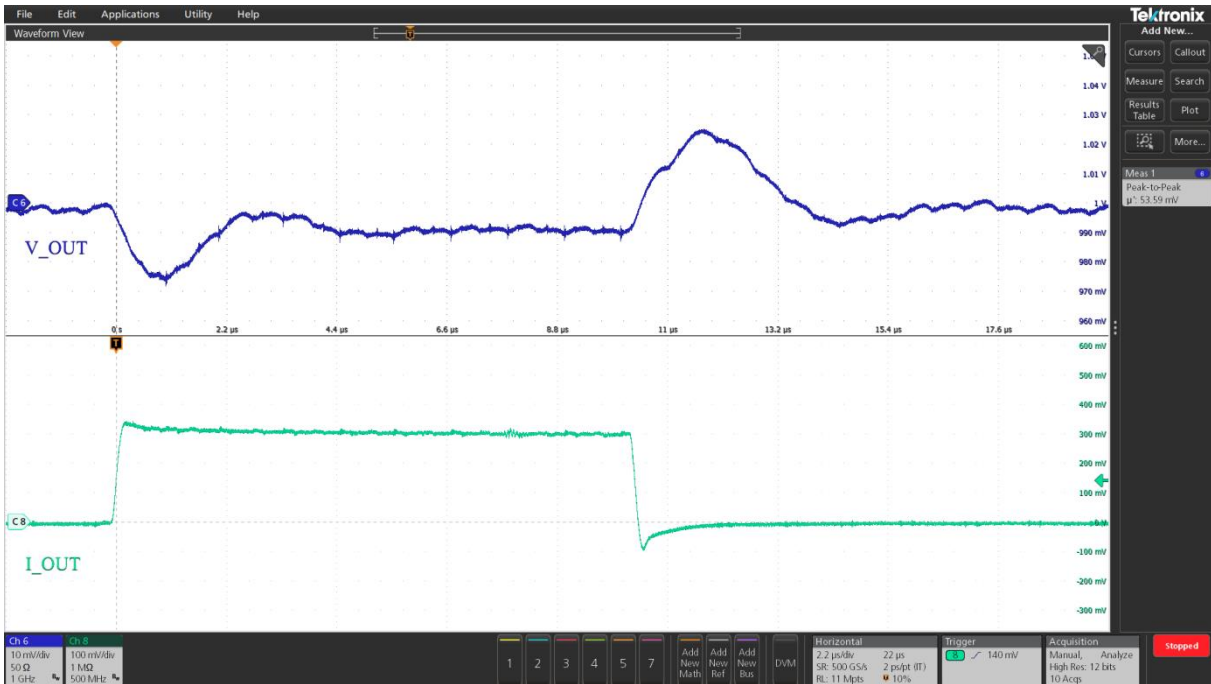


Figure 15 Transient response 0A to 6A (Ch6: V_{OUT} , Ch8: I_o), peak-peak deviation = 53mV, load slew rate = 40A/ μ s

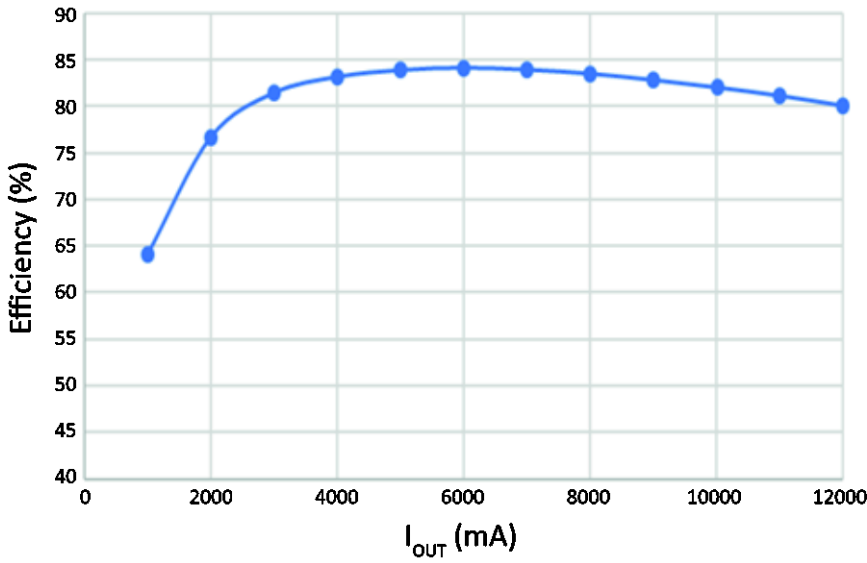


Figure 16 *Efficiency*

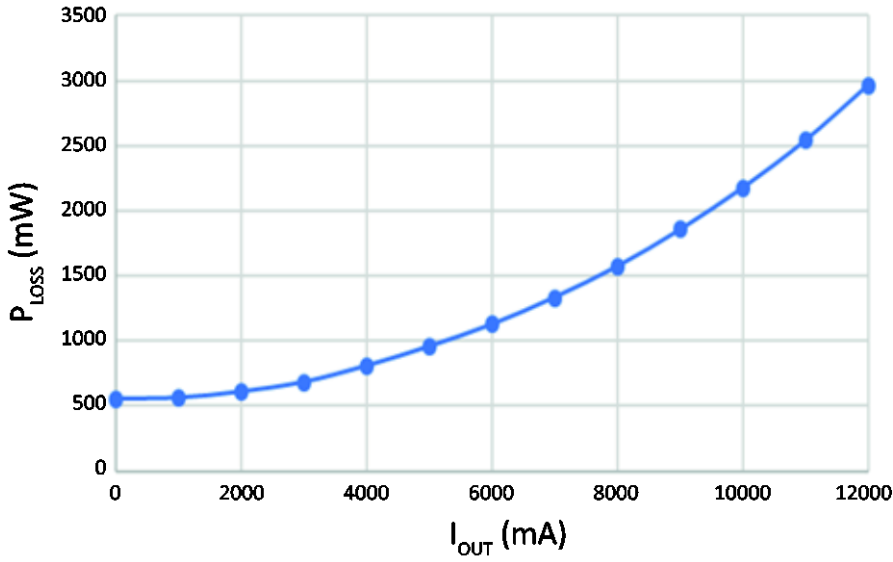


Figure 17 *Power loss*

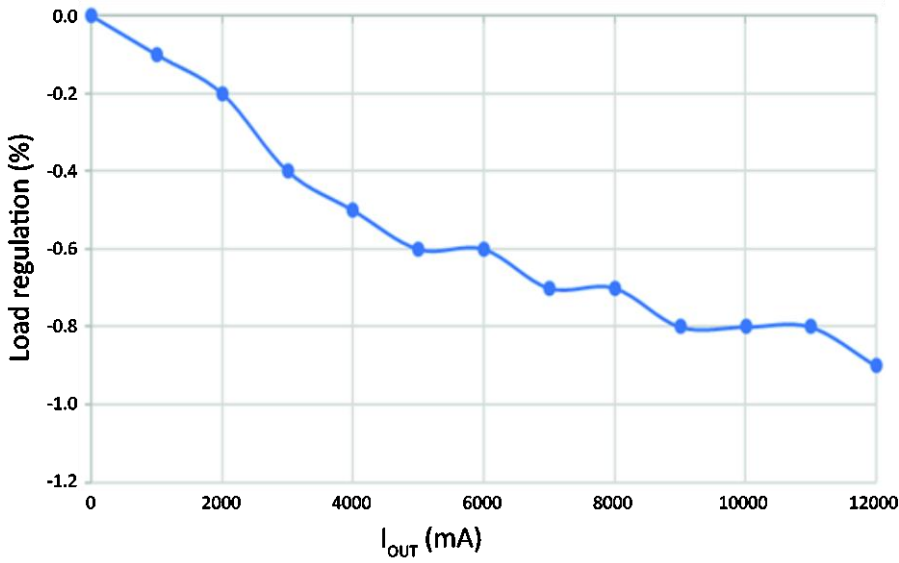


Figure 18 Load regulation ($I_o = 0-12A$)

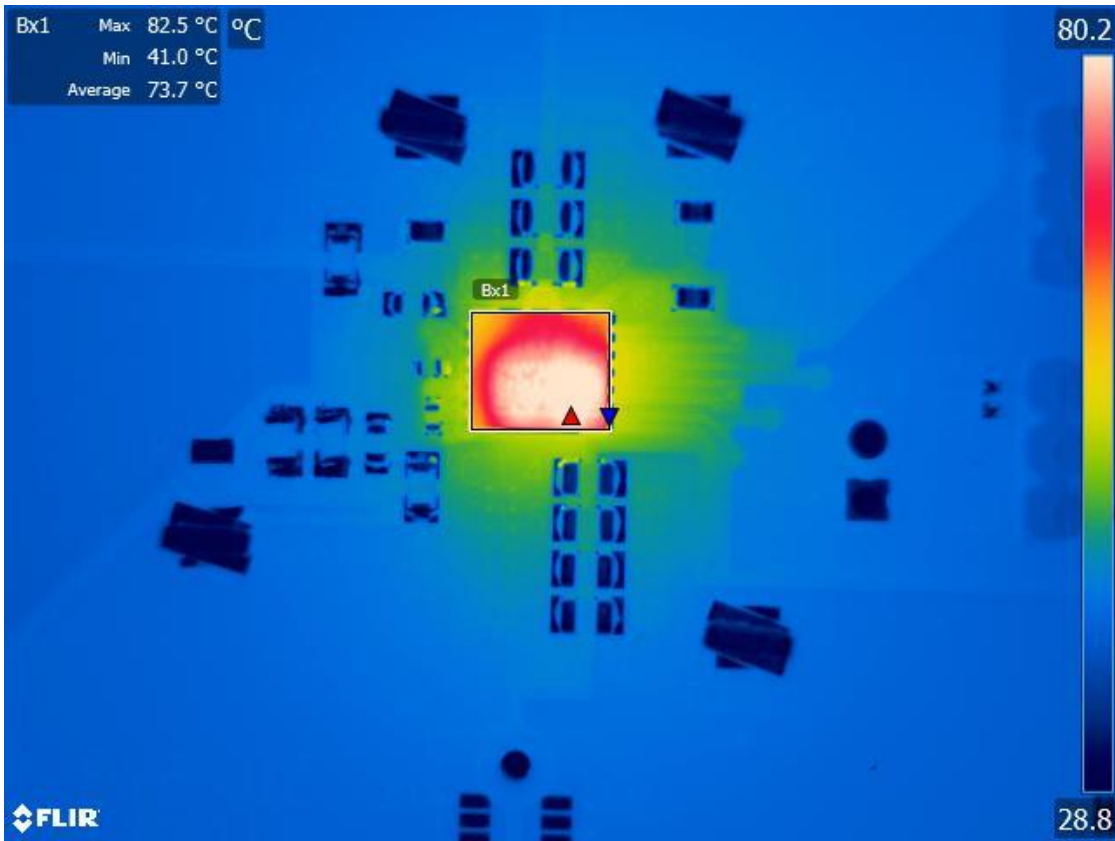


Figure 19 Thermal image at $PV_{IN} = 12V$, $V_{OUT} = 1.0V$, $I_o = 12A$, room temperature, no airflow, FS1412 maximum temperature rise = $55.5^{\circ}C$

Disclaimer

IMPORTANT NOTICE AND DISCLAIMER

TDK PROVIDES THIS POWER DESIGN USER GUIDE (“Resources”) “AS IS” AND WITH ALL FAULTS, AND DISCLAIMS. ALL WARRANTIES, EXPRESS AND IMPLIED, INCLUDING WITHOUT LIMITATION ANY IMPLIED WARRANTIES OF MERCHANTABILITY, FITNESS FOR A PARTICULAR PURPOSE OR NON-INFRINGEMENT OF THIRD PARTY INTELLECTUAL PROPERTY RIGHTS.

These Resources are intended for skilled developers designing with TDK products. You are solely responsible for (1) selecting the appropriate TDK products for your application, (2) designing, validating and testing your application, (3) ensuring your application meets applicable standards, and any other safety, security, or other requirements, and (4) ensuring your application complies with all applicable laws and regulations. These Resources are subject to change without notice and TDK assumes no responsibility for any notices or lack thereof. TDK grants you permission to use these Resources solely for development of an application that uses the TDK products described in the Resource.

This permission may be revoked at any time by TDK or any of its affiliates. Your use of these Resources shall be in compliance with all applicable laws and regulations including applicable export/import controls. Reproduction and display of these Resources is prohibited. No license is granted to any other TDK intellectual property right or to any third party intellectual property right. TDK disclaims responsibility for, and you agree to fully indemnify TDK, its affiliates and its representatives against, any claims, damages, costs, losses, and liabilities arising out of your use of these Resources.

REMINDERS FOR USING THESE PRODUCTS

Before using these products, be sure to request the delivery specifications.

SAFETY REMINDERS

Please pay sufficient attention to the warnings for safe designing when using these products.

The products listed on this specification sheet are intended for use in general electric equipment (AV equipment, telecommunication equipment, home appliances, amusement equipment, computer equipment, personal equipment, office equipment, measurement equipment, industrial robots) under a normal condition and use condition.

The products are not designed or warranted to meet the requirements of the applications listed below, whose performance and/or quality require a more stringent level of safety or reliability, or whose failure, malfunction or trouble could cause serious damage to sociality, person or property. Please understand that we are not responsible for any damage or liability caused by use of the products in any of the applications below or for any other use exceeding the range or conditions set forth in this specification sheet.

1. Aerospace/Aviation equipment
2. Transportation equipment (cars, electric trains, ships, etc.)
3. Medical equipment
4. Power-generation control equipment
5. Atomic energy related equipment
6. Seabed equipment
7. Transportation control equipment
8. Public Information-processing equipment
9. Military equipment
10. Electric heating apparatus, burning equipment
11. Disaster prevention/crime prevention equipment
12. Safety equipment
13. Other applications that are not considered general-purpose applications

When using this product in general-purpose application, you are kindly requested to take into consideration securing protection circuit/ equipment or providing backup circuits, etc., to ensure higher safety.

This product is subject to a license from Power One, Inc. related to digital power technology patents owned by Power One, Inc. Power One, Inc. technology is protected by patents including:	
AU	3287379M 3287437AA 3290643AA 3291357AA
CN	10371856C 10452610C 10458656C 10459360C 10465848C 1069332A 11124619A 11346682A 1685299A 1685459A 1685582A 1685583A 1698023A 1802619A
EP	1561156A1 1561268A2 1576710A1 1576711A1 1604254A4 1604264A4 1714369A2 1745536A4 1769382A4 1899789A2 1984801A2
US	20040246754 2004090219A1 2004093533A1 2004123164A1 2004123167A1 2004178780A1 2004179382A1 20050200344 20050223252 2005209373A1 20060061214 2006015619A1 20060174145 20070226526 20070234095 20070240000 20080052551 20080072080 20080186006 6741099 6788036 6936999 6949916 7000125 7049798 7069021 7080265 7249267 7266709 7315156 7372682 7373527 7394445 7456617 7459892 7493504 7526660
WO	04044718A1 04045042A3 04045042C1 04062061A1 04062062A1 04070780A3 04084390A3 04084391A3 05079227A3 05081771A3 06019569A3 2007001584A3 2007094935A3