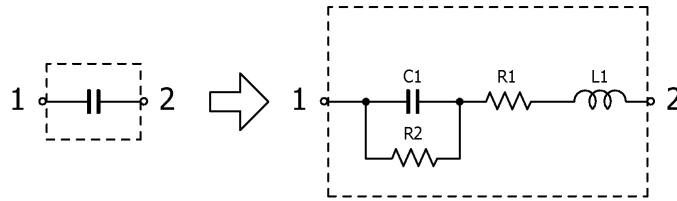


Multilayer Ceramic Chip Capacitors

Dec. 6, 2024
Simple Model

Automotive Grade, MEGACAP Type (Low resistance, inline type) / CAA572 series

Circuit Diagram



Circuit Parameters

| Part No. | C1[pF] | L1[nH] | R1[ohm] | R2[Gohm] |
|----------------------|-------------|--------|---------|----------|
| CAA572C0G3A203J640LJ | 20,000 | 2.114 | 0.0149 | 10.0 |
| CAA572C0G3A303J640LJ | 30,000 | 2.165 | 0.0121 | 10.0 |
| CAA572C0G3A443J640LJ | 44,000 | 1.975 | 0.0115 | 10.0 |
| CAA572C0G3A663J640LJ | 66,000 | 1.951 | 0.0102 | 7.58 |
| CAA572X7R1E107M670LJ | 100,000,000 | 2.163 | 0.0022 | 0.00500 |
| CAA572X7R1V107M670LJ | 100,000,000 | 2.163 | 0.0022 | 0.00500 |
| CAA572X7S2A336M640LJ | 33,000,000 | 2.247 | 0.0026 | 0.0150 |
| CAA572X7T2V225M640LJ | 2,200,000 | 2.318 | 0.0064 | 0.227 |
| CAA572X7T2J105M640LJ | 1,000,000 | 2.390 | 0.0091 | 0.500 |
| CAA572X6T2W225M640LJ | 2,200,000 | 2.130 | 0.0064 | 0.227 |