

Multilayer Ceramic Chip Capacitors

May 23, 2024
Simple Model

Commercial Grade, General (Up to 75V) / C1608 series (1/10)

Circuit Diagram



Circuit Parameters

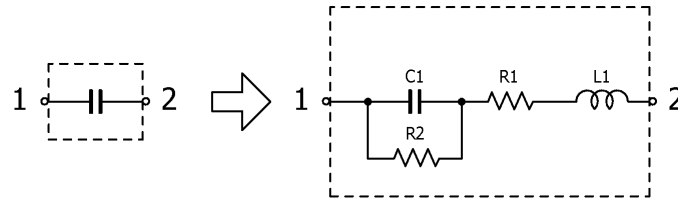
Part No.	C1[pF]	L1[nH]	R1[ohm]	R2[Gohm]
C1608C0G1H010C080AA	1	0.420	0.9827	10.0
C1608C0G1H020C080AA	2	0.420	0.9188	10.0
C1608C0G1H030C080AA	3	0.420	0.7233	10.0
C1608C0G1H040C080AA	4	0.420	0.5992	10.0
C1608C0G1H050C080AA	5	0.420	0.3921	10.0
C1608C0G1H060C080AA	6	0.420	0.3985	10.0
C1608C0G1H060D080AA	6	0.420	0.3985	10.0
C1608C0G1H070C080AA	7	0.420	0.4918	10.0
C1608C0G1H070D080AA	7	0.420	0.4918	10.0
C1608C0G1H080C080AA	8	0.420	0.3141	10.0
C1608C0G1H080D080AA	8	0.420	0.3141	10.0
C1608C0G1H090C080AA	9	0.420	0.4633	10.0
C1608C0G1H090D080AA	9	0.420	0.4633	10.0
C1608C0G1H100C080AA	10	0.420	0.3084	10.0
C1608C0G1H100D080AA	10	0.420	0.3084	10.0
C1608C0G1H150F080AA	15	0.420	0.3727	10.0
C1608C0G1H150G080AA	15	0.420	0.3727	10.0
C1608C0G1H150J080AA	15	0.420	0.3727	10.0
C1608C0G1H220F080AA	22	0.420	0.2911	10.0
C1608C0G1H220G080AA	22	0.420	0.2911	10.0
C1608C0G1H220J080AA	22	0.420	0.2911	10.0
C1608C0G1H330F080AA	33	0.420	0.2471	10.0
C1608C0G1H330G080AA	33	0.420	0.2471	10.0
C1608C0G1H330J080AA	33	0.420	0.2471	10.0
C1608C0G1H470F080AA	47	0.420	0.2173	10.0
C1608C0G1H470G080AA	47	0.420	0.2173	10.0
C1608C0G1H470J080AA	47	0.420	0.2173	10.0
C1608C0G1H680F080AA	68	0.420	0.1473	10.0
C1608C0G1H680G080AA	68	0.420	0.1473	10.0
C1608C0G1H680J080AA	68	0.420	0.1473	10.0
C1608C0G1H101F080AA	100	0.420	0.1402	10.0
C1608C0G1H101G080AA	100	0.420	0.1402	10.0
C1608C0G1H101J080AA	100	0.420	0.1402	10.0
C1608C0G1H101K080AA	100	0.420	0.1402	10.0
C1608C0G1H151F080AA	150	0.420	0.0807	10.0
C1608C0G1H151G080AA	150	0.420	0.0807	10.0

Multilayer Ceramic Chip Capacitors

May 23, 2024
Simple Model

Commercial Grade, General (Up to 75V) / C1608 series (2/10)

Circuit Diagram



Circuit Parameters

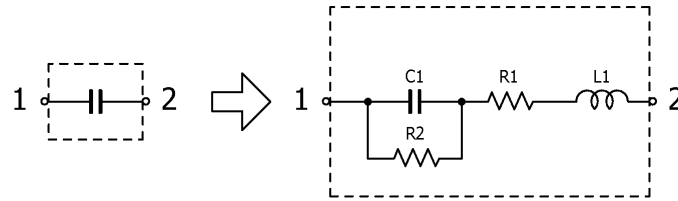
Part No.	C1[pF]	L1[nH]	R1[ohm]	R2[Gohm]
C1608C0G1H151J080AA	150	0.420	0.0807	10.0
C1608C0G1H151K080AA	150	0.420	0.0807	10.0
C1608C0G1H221F080AA	220	0.420	0.0681	10.0
C1608C0G1H221G080AA	220	0.420	0.0681	10.0
C1608C0G1H221J080AA	220	0.420	0.0681	10.0
C1608C0G1H221K080AA	220	0.420	0.0681	10.0
C1608C0G1H331F080AA	330	0.420	0.0770	10.0
C1608C0G1H331G080AA	330	0.420	0.0770	10.0
C1608C0G1H331J080AA	330	0.420	0.0770	10.0
C1608C0G1H331K080AA	330	0.420	0.0770	10.0
C1608C0G1H471F080AA	470	0.420	0.0560	10.0
C1608C0G1H471G080AA	470	0.420	0.0560	10.0
C1608C0G1H471J080AA	470	0.420	0.0560	10.0
C1608C0G1H471K080AA	470	0.420	0.0560	10.0
C1608C0G1H681F080AA	680	0.420	0.0473	10.0
C1608C0G1H681G080AA	680	0.420	0.0473	10.0
C1608C0G1H681J080AA	680	0.420	0.0473	10.0
C1608C0G1H681K080AA	680	0.420	0.0473	10.0
C1608C0G1H102F080AA	1,000	0.420	0.0396	10.0
C1608C0G1H102G080AA	1,000	0.420	0.0396	10.0
C1608C0G1H102J080AA	1,000	0.420	0.0396	10.0
C1608C0G1H102K080AA	1,000	0.420	0.0396	10.0
C1608X5R1H102K080AA	1,000	0.420	0.2105	10.0
C1608X7R1H102K080AA	1,000	0.420	0.2105	10.0
C1608C0G1H152J080AA	1,500	0.420	0.0284	10.0
C1608C0G1H222J080AA	2,200	0.420	0.0310	10.0
C1608C0G1H222K080AA	2,200	0.420	0.0310	10.0
C1608X5R1H222K080AA	2,200	0.420	0.1399	10.0
C1608X7R1H222K080AA	2,200	0.420	0.1399	10.0
C1608C0G1H332J080AA	3,300	0.420	0.0218	10.0
C1608C0G1H332K080AA	3,300	0.420	0.0218	10.0
C1608C0G1H472J080AA	4,700	0.420	0.0255	10.0
C1608C0G1H472K080AA	4,700	0.420	0.0255	10.0
C1608C0G1E472J080AA	4,700	0.420	0.0255	10.0
C1608X5R1H472K080AA	4,700	0.420	0.0872	10.0
C1608X7R1H472K080AA	4,700	0.420	0.0872	10.0

Multilayer Ceramic Chip Capacitors

May 23, 2024
Simple Model

Commercial Grade, General (Up to 75V) / C1608 series (3/10)

Circuit Diagram



Circuit Parameters

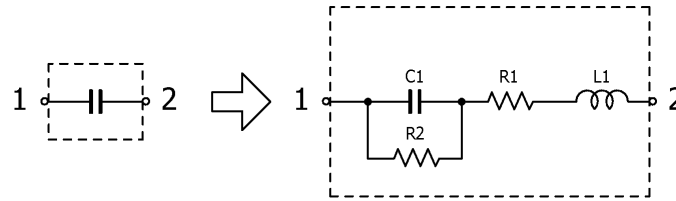
Part No.	C1[pF]	L1[nH]	R1[ohm]	R2[Gohm]
C1608C0G1H682J080AA	6,800	0.420	0.0173	10.0
C1608C0G1H682K080AA	6,800	0.420	0.0173	10.0
C1608C0G1E682J080AA	6,800	0.420	0.0173	10.0
C1608C0G1H103J080AA	10,000	0.420	0.0160	10.0
C1608C0G1H103K080AA	10,000	0.420	0.0160	10.0
C1608C0G1E103J080AA	10,000	0.420	0.0160	10.0
C1608X5R1H103K080AA	10,000	0.420	0.0538	10.0
C1608X5R1H103M080AA	10,000	0.420	0.0538	10.0
C1608X7R1H103K080AA	10,000	0.420	0.0538	10.0
C1608X7R1H103M080AA	10,000	0.420	0.0538	10.0
C1608X7R1E103K080AA	10,000	0.420	0.0538	10.0
C1608C0G1V153J080AC	15,000	0.420	0.0130	10.0
C1608X5R1H153K080AA	15,000	0.420	0.0462	10.0
C1608X5R1H153M080AA	15,000	0.420	0.0462	10.0
C1608X7R1H153K080AA	15,000	0.420	0.0462	10.0
C1608X7R1H153M080AA	15,000	0.420	0.0462	10.0
C1608C0G1V183J080AC	18,000	0.420	0.0119	10.0
C1608X5R1H223K080AA	22,000	0.420	0.0377	10.0
C1608X5R1H223M080AA	22,000	0.420	0.0377	10.0
C1608X7R1H223K080AA	22,000	0.420	0.0377	10.0
C1608X7R1H223M080AA	22,000	0.420	0.0377	10.0
C1608X5R1H333K080AA	33,000	0.420	0.0294	10.0
C1608X5R1H333M080AA	33,000	0.420	0.0294	10.0
C1608X7R1H333K080AA	33,000	0.420	0.0294	10.0
C1608X7R1H333M080AA	33,000	0.420	0.0294	10.0
C1608X5R1H473K080AA	47,000	0.420	0.0232	10.0
C1608X5R1H473M080AA	47,000	0.420	0.0232	10.0
C1608X7R1H473K080AA	47,000	0.420	0.0232	10.0
C1608X7R1H473M080AA	47,000	0.420	0.0232	10.0
C1608X5R1H683K080AA	68,000	0.420	0.0186	7.35
C1608X5R1H683M080AA	68,000	0.420	0.0186	7.35
C1608X7R1H683K080AA	68,000	0.420	0.0186	7.35
C1608X7R1H683M080AA	68,000	0.420	0.0186	7.35
C1608X5R1H104K080AA	100,000	0.420	0.0163	5.00
C1608X5R1H104M080AA	100,000	0.420	0.0163	5.00
C1608X7R1H104K080AA	100,000	0.420	0.0163	5.00

Multilayer Ceramic Chip Capacitors

May 23, 2024
Simple Model

Commercial Grade, General (Up to 75V) / C1608 series (4/10)

Circuit Diagram



Circuit Parameters

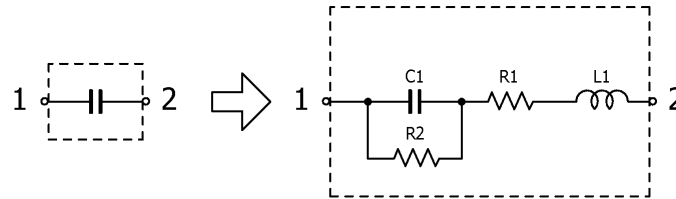
Part No.	C1[pF]	L1[nH]	R1[ohm]	R2[Gohm]
C1608X7R1H104M080AA	100,000	0.420	0.0163	5.00
C1608X7R1E104K080AA	100,000	0.420	0.0163	5.00
C1608X7R1E104M080AA	100,000	0.420	0.0163	5.00
C1608X5R1H154K080AB	150,000	0.420	0.0163	3.33
C1608X5R1H154M080AB	150,000	0.420	0.0163	3.33
C1608X5R1V154K080AB	150,000	0.420	0.0163	3.33
C1608X5R1V154M080AB	150,000	0.420	0.0163	3.33
C1608X5R1E154K080AA	150,000	0.420	0.0131	3.33
C1608X5R1E154M080AA	150,000	0.420	0.0131	3.33
C1608X6S1H154K080AB	150,000	0.420	0.0163	3.33
C1608X6S1H154M080AB	150,000	0.420	0.0163	3.33
C1608X6S1V154K080AB	150,000	0.420	0.0163	3.33
C1608X6S1V154M080AB	150,000	0.420	0.0163	3.33
C1608X7R1H154K080AB	150,000	0.420	0.0163	3.33
C1608X7R1H154M080AB	150,000	0.420	0.0163	3.33
C1608X7R1V154K080AB	150,000	0.420	0.0163	3.33
C1608X7R1V154M080AB	150,000	0.420	0.0163	3.33
C1608X7R1E154K080AA	150,000	0.420	0.0131	3.33
C1608X7R1E154M080AA	150,000	0.420	0.0131	3.33
C1608X5R1H224K080AB	220,000	0.420	0.0151	2.27
C1608X5R1H224M080AB	220,000	0.420	0.0128	2.27
C1608X5R1V224K080AB	220,000	0.420	0.0128	2.27
C1608X5R1V224M080AB	220,000	0.420	0.0128	2.27
C1608X5R1E224K080AA	220,000	0.420	0.0125	2.27
C1608X5R1E224M080AA	220,000	0.420	0.0125	2.27
C1608X6S1H224K080AB	220,000	0.420	0.0128	2.27
C1608X6S1H224M080AB	220,000	0.420	0.0128	2.27
C1608X6S1V224K080AB	220,000	0.420	0.0128	2.27
C1608X6S1V224M080AB	220,000	0.420	0.0128	2.27
C1608X7R1H224K080AB	220,000	0.420	0.0151	2.27
C1608X7R1H224M080AB	220,000	0.420	0.0128	2.27
C1608X7R1V224K080AB	220,000	0.420	0.0151	2.27
C1608X7R1V224M080AB	220,000	0.420	0.0128	2.27
C1608X7R1E224K080AC	220,000	0.420	0.0125	2.27
C1608X7R1E224M080AC	220,000	0.420	0.0125	2.27
C1608X7R1C224K080AC	220,000	0.420	0.0125	0.454

Multilayer Ceramic Chip Capacitors

May 23, 2024
Simple Model

Commercial Grade, General (Up to 75V) / C1608 series (5/10)

Circuit Diagram



Circuit Parameters

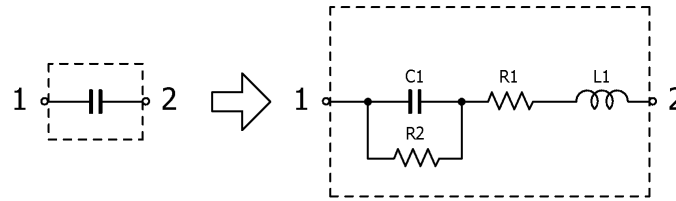
Part No.	C1[pF]	L1[nH]	R1[ohm]	R2[Gohm]
C1608X7R1C224M080AC	220,000	0.420	0.0125	0.454
C1608X5R1H334K080AB	330,000	0.420	0.0128	1.52
C1608X5R1H334M080AB	330,000	0.420	0.0128	1.52
C1608X5R1V334K080AB	330,000	0.420	0.0128	1.52
C1608X5R1V334M080AB	330,000	0.420	0.0128	1.52
C1608X5R1E334K080AC	330,000	0.420	0.0106	0.303
C1608X5R1E334M080AC	330,000	0.420	0.0106	0.303
C1608X5R1C334K080AA	330,000	0.420	0.0106	0.303
C1608X5R1C334M080AA	330,000	0.420	0.0106	0.303
C1608X6S1H334K080AB	330,000	0.420	0.0128	1.52
C1608X6S1H334M080AB	330,000	0.420	0.0128	1.52
C1608X6S1V334K080AB	330,000	0.420	0.0128	1.52
C1608X6S1V334M080AB	330,000	0.420	0.0128	1.52
C1608X6S1E334K080AB	330,000	0.420	0.0128	1.52
C1608X6S1E334M080AB	330,000	0.420	0.0128	1.52
C1608X7R1H334K080AC	330,000	0.420	0.0128	1.52
C1608X7R1H334M080AC	330,000	0.420	0.0128	1.52
C1608X7R1V334K080AB	330,000	0.420	0.0128	1.52
C1608X7R1V334M080AB	330,000	0.420	0.0128	1.52
C1608X7R1E334K080AC	330,000	0.420	0.0106	0.303
C1608X7R1E334M080AC	330,000	0.420	0.0106	0.303
C1608X7R1C334K080AC	330,000	0.420	0.0106	0.303
C1608X7R1C334M080AC	330,000	0.420	0.0106	0.303
C1608X5R1H474K080AB	470,000	0.420	0.0093	1.06
C1608X5R1H474M080AB	470,000	0.420	0.0093	1.06
C1608X5R1V474K080AB	470,000	0.420	0.0093	1.06
C1608X5R1V474M080AB	470,000	0.420	0.0093	1.06
C1608X5R1E474K080AC	470,000	0.420	0.0078	0.212
C1608X5R1E474M080AC	470,000	0.420	0.0078	0.212
C1608X5R1C474K080AA	470,000	0.420	0.0078	0.212
C1608X5R1C474M080AA	470,000	0.420	0.0078	0.212
C1608X5R1A474K080AA	470,000	0.420	0.0128	0.212
C1608X6S1H474K080AB	470,000	0.420	0.0093	1.06
C1608X6S1H474M080AB	470,000	0.420	0.0093	1.06
C1608X6S1V474K080AB	470,000	0.420	0.0093	1.06
C1608X6S1V474M080AB	470,000	0.420	0.0093	1.06

Multilayer Ceramic Chip Capacitors

May 23, 2024
Simple Model

Commercial Grade, General (Up to 75V) / C1608 series (6/10)

Circuit Diagram



Circuit Parameters

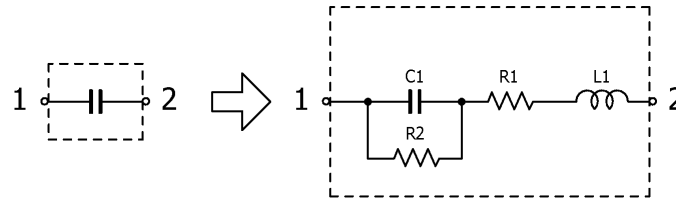
Part No.	C1[pF]	L1[nH]	R1[ohm]	R2[Gohm]
C1608X6S1E474K080AB	470,000	0.420	0.0093	1.06
C1608X6S1E474M080AB	470,000	0.420	0.0093	1.06
C1608X7R1H474K080AC	470,000	0.420	0.0093	1.06
C1608X7R1H474M080AC	470,000	0.420	0.0093	1.06
C1608X7R1V474K080AB	470,000	0.420	0.0093	1.06
C1608X7R1V474M080AB	470,000	0.420	0.0093	1.06
C1608X7R1E474K080AB	470,000	0.420	0.0093	1.06
C1608X7R1E474M080AB	470,000	0.420	0.0093	1.06
C1608X7R1C474K080AC	470,000	0.420	0.0078	0.212
C1608X7R1C474M080AC	470,000	0.420	0.0078	0.212
C1608X5R1H684K080AB	680,000	0.420	0.0067	0.735
C1608X5R1H684M080AB	680,000	0.420	0.0067	0.735
C1608X5R1V684K080AB	680,000	0.420	0.0067	0.735
C1608X5R1V684M080AB	680,000	0.420	0.0067	0.735
C1608X5R1E684K080AC	680,000	0.420	0.0082	0.147
C1608X5R1E684M080AC	680,000	0.420	0.0082	0.147
C1608X5R1C684K080AA	680,000	0.420	0.0082	0.147
C1608X5R1C684M080AA	680,000	0.420	0.0082	0.147
C1608X5R1A684K080AC	680,000	0.420	0.0079	0.147
C1608X5R1A684M080AC	680,000	0.420	0.0079	0.147
C1608X6S1H684K080AC	680,000	0.420	0.0067	0.735
C1608X6S1H684M080AC	680,000	0.420	0.0067	0.735
C1608X6S1V684K080AB	680,000	0.420	0.0067	0.735
C1608X6S1V684M080AB	680,000	0.420	0.0067	0.735
C1608X6S1E684K080AB	680,000	0.420	0.0067	0.735
C1608X6S1E684M080AB	680,000	0.420	0.0067	0.735
C1608X6S1C684K080AC	680,000	0.420	0.0082	0.147
C1608X6S1C684M080AC	680,000	0.420	0.0082	0.147
C1608X7R1V684K080AC	680,000	0.420	0.0067	0.735
C1608X7R1V684M080AC	680,000	0.420	0.0067	0.735
C1608X7R1E684K080AB	680,000	0.420	0.0067	0.735
C1608X7R1E684M080AB	680,000	0.420	0.0067	0.735
C1608X7R1C684K080AC	680,000	0.420	0.0082	0.147
C1608X7R1C684M080AC	680,000	0.420	0.0082	0.147
C1608X7R1A684K080AC	680,000	0.420	0.0079	0.147
C1608X7R1A684M080AC	680,000	0.420	0.0079	0.147

Multilayer Ceramic Chip Capacitors

May 23, 2024
Simple Model

Commercial Grade, General (Up to 75V) / C1608 series (7/10)

Circuit Diagram



Circuit Parameters

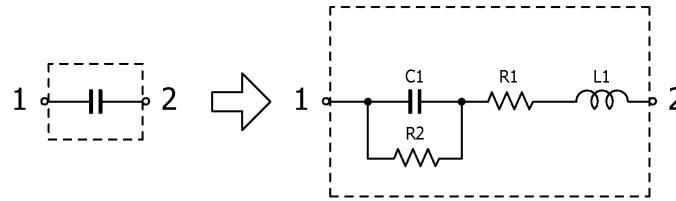
Part No.	C1[pF]	L1[nH]	R1[ohm]	R2[Gohm]
C1608X5R1H105K080AB	1,000,000	0.420	0.0056	0.500
C1608X5R1H105M080AB	1,000,000	0.420	0.0056	0.500
C1608X5R1V105K080AB	1,000,000	0.420	0.0056	0.500
C1608X5R1V105M080AB	1,000,000	0.420	0.0056	0.500
C1608X5R1E105K080AC	1,000,000	0.420	0.0057	0.100
C1608X5R1E105M080AC	1,000,000	0.420	0.0057	0.100
C1608X5R1C105K080AA	1,000,000	0.420	0.0057	0.100
C1608X5R1C105M080AA	1,000,000	0.420	0.0057	0.100
C1608X5R1A105K080AC	1,000,000	0.420	0.0096	0.100
C1608X5R1A105M080AC	1,000,000	0.420	0.0096	0.100
C1608X6S1H105K080AC	1,000,000	0.420	0.0056	0.500
C1608X6S1H105M080AC	1,000,000	0.420	0.0056	0.500
C1608X6S1V105K080AB	1,000,000	0.420	0.0056	0.500
C1608X6S1V105M080AB	1,000,000	0.420	0.0056	0.500
C1608X6S1E105K080AB	1,000,000	0.420	0.0056	0.500
C1608X6S1E105M080AB	1,000,000	0.420	0.0056	0.500
C1608X6S1C105K080AC	1,000,000	0.420	0.0057	0.100
C1608X6S1C105M080AC	1,000,000	0.420	0.0057	0.100
C1608X6S1A105K080AC	1,000,000	0.420	0.0096	0.100
C1608X6S1A105M080AC	1,000,000	0.420	0.0096	0.100
C1608X6S0J105K080AC	1,000,000	0.420	0.0096	0.100
C1608X6S0J105M080AC	1,000,000	0.420	0.0096	0.100
C1608X7R1V105K080AC	1,000,000	0.420	0.0056	0.500
C1608X7R1V105M080AC	1,000,000	0.420	0.0056	0.500
C1608X7R1E105K080AB	1,000,000	0.420	0.0056	0.500
C1608X7R1E105M080AB	1,000,000	0.420	0.0056	0.500
C1608X7R1C105K080AC	1,000,000	0.420	0.0057	0.100
C1608X7R1C105M080AC	1,000,000	0.420	0.0057	0.100
C1608X7R1A105K080AC	1,000,000	0.420	0.0096	0.100
C1608X7R1A105M080AC	1,000,000	0.420	0.0096	0.100
C1608X5R1V155K080AC	1,500,000	0.420	0.0088	0.333
C1608X5R1V155M080AC	1,500,000	0.420	0.0088	0.333
C1608X5R1E155K080AB	1,500,000	0.420	0.0088	0.333
C1608X5R1E155M080AB	1,500,000	0.420	0.0088	0.333
C1608X5R1C155K080AB	1,500,000	0.420	0.0088	0.0660
C1608X5R1C155M080AB	1,500,000	0.420	0.0088	0.0660

Multilayer Ceramic Chip Capacitors

May 23, 2024
Simple Model

Commercial Grade, General (Up to 75V) / C1608 series (8/10)

Circuit Diagram



Circuit Parameters

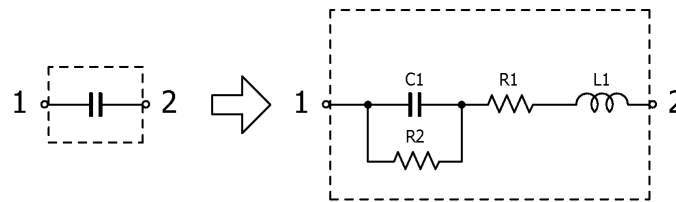
Part No.	C1[pF]	L1[nH]	R1[ohm]	R2[Gohm]
C1608X6S1C155K080AC	1,500,000	0.420	0.0088	0.0660
C1608X6S1C155M080AC	1,500,000	0.420	0.0088	0.0660
C1608X6S1A155K080AB	1,500,000	0.420	0.0090	0.0660
C1608X6S1A155M080AB	1,500,000	0.420	0.0090	0.0660
C1608X6S0J155K080AB	1,500,000	0.420	0.0088	0.0660
C1608X6S0J155M080AB	1,500,000	0.420	0.0088	0.0660
C1608X7R1A155K080AC	1,500,000	0.420	0.0050	0.0660
C1608X7R1A155M080AC	1,500,000	0.420	0.0050	0.0660
C1608X7R0J155K080AB	1,500,000	0.420	0.0050	0.0660
C1608X7R0J155M080AB	1,500,000	0.420	0.0050	0.0660
C1608X7S1C155M080AC	1,500,000	0.420	0.0058	0.0660
C1608X5R1V225K080AC	2,200,000	0.420	0.0083	0.227
C1608X5R1V225M080AC	2,200,000	0.420	0.0083	0.227
C1608X5R1E225K080AB	2,200,000	0.420	0.0083	0.227
C1608X5R1E225M080AB	2,200,000	0.420	0.0083	0.227
C1608X5R1C225K080AB	2,200,000	0.420	0.0083	0.0450
C1608X5R1C225M080AB	2,200,000	0.420	0.0083	0.0450
C1608X6S1C225K080AC	2,200,000	0.420	0.0083	0.0450
C1608X6S1C225M080AC	2,200,000	0.420	0.0083	0.0450
C1608X6S1A225K080AB	2,200,000	0.420	0.0059	0.0450
C1608X6S1A225M080AB	2,200,000	0.420	0.0059	0.0450
C1608X6S0J225K080AB	2,200,000	0.420	0.0083	0.0450
C1608X6S0J225M080AB	2,200,000	0.420	0.0083	0.0450
C1608X7R1A225K080AC	2,200,000	0.420	0.0043	0.0450
C1608X7R1A225M080AC	2,200,000	0.420	0.0043	0.0450
C1608X7R0J225K080AB	2,200,000	0.420	0.0043	0.0450
C1608X7R0J225M080AB	2,200,000	0.420	0.0043	0.0450
C1608X7S1C225K080AC	2,200,000	0.420	0.0037	0.0450
C1608X7S1C225M080AC	2,200,000	0.420	0.0037	0.0450
C1608X7S1A225K080AC	2,200,000	0.420	0.0083	0.0450
C1608X7S1A225M080AC	2,200,000	0.420	0.0083	0.0450
C1608X7S0J225K080AB	2,200,000	0.420	0.0083	0.0450
C1608X7S0J225M080AB	2,200,000	0.420	0.0083	0.0450
C1608X5R1V335K080AC	3,300,000	0.420	0.0050	0.151
C1608X5R1V335M080AC	3,300,000	0.420	0.0050	0.151
C1608X5R1E335K080AC	3,300,000	0.420	0.0050	0.0300

Multilayer Ceramic Chip Capacitors

May 23, 2024
Simple Model

Commercial Grade, General (Up to 75V) / C1608 series (9/10)

Circuit Diagram



Circuit Parameters

Part No.	C1[pF]	L1[nH]	R1[ohm]	R2[Gohm]
C1608X5R1E335M080AC	3,300,000	0.420	0.0050	0.0300
C1608X5R1C335K080AC	3,300,000	0.420	0.0050	0.0300
C1608X5R1C335M080AC	3,300,000	0.420	0.0050	0.0300
C1608X6S1C335K080AC	3,300,000	0.420	0.0050	0.0300
C1608X6S1C335M080AC	3,300,000	0.420	0.0050	0.0300
C1608X6S1A335K080AC	3,300,000	0.420	0.0050	0.0300
C1608X6S1A335M080AC	3,300,000	0.420	0.0050	0.0300
C1608X6S0J335K080AB	3,300,000	0.420	0.0050	0.0300
C1608X6S0J335M080AB	3,300,000	0.420	0.0050	0.0300
C1608X7S1A335K080AC	3,300,000	0.420	0.0050	0.0300
C1608X7S1A335M080AC	3,300,000	0.420	0.0050	0.0300
C1608X7S0J335K080AC	3,300,000	0.420	0.0050	0.0300
C1608X7S0J335M080AC	3,300,000	0.420	0.0050	0.0300
C1608X7S0G335K080AC	3,300,000	0.420	0.0050	0.0300
C1608X7S0G335M080AC	3,300,000	0.420	0.0050	0.0300
C1608X5R1V475K080AC	4,700,000	0.420	0.0038	0.106
C1608X5R1V475M080AC	4,700,000	0.420	0.0038	0.106
C1608X5R1E475K080AC	4,700,000	0.420	0.0038	0.0210
C1608X5R1E475M080AC	4,700,000	0.420	0.0038	0.0210
C1608X5R1C475K080AC	4,700,000	0.420	0.0038	0.0210
C1608X5R1C475M080AC	4,700,000	0.420	0.0038	0.0210
C1608X6S1C475K080AC	4,700,000	0.420	0.0038	0.0210
C1608X6S1C475M080AC	4,700,000	0.420	0.0038	0.0210
C1608X6S1A475K080AC	4,700,000	0.420	0.0038	0.0210
C1608X6S1A475M080AC	4,700,000	0.420	0.0038	0.0210
C1608X6S0J475K080AB	4,700,000	0.420	0.0038	0.0210
C1608X6S0J475M080AB	4,700,000	0.420	0.0038	0.0210
C1608X7S1A475K080AC	4,700,000	0.420	0.0038	0.0210
C1608X7S1A475M080AC	4,700,000	0.420	0.0038	0.0210
C1608X7S0J475K080AC	4,700,000	0.420	0.0038	0.0210
C1608X7S0J475M080AC	4,700,000	0.420	0.0038	0.0210
C1608X7S0G475K080AC	4,700,000	0.420	0.0038	0.0210
C1608X7S0G475M080AC	4,700,000	0.420	0.0038	0.0210
C1608X5R1E685K080AC	6,800,000	0.420	0.0045	0.0140
C1608X5R1E685M080AC	6,800,000	0.420	0.0045	0.0140
C1608X5R1C685K080AB	6,800,000	0.420	0.0045	0.0140

Multilayer Ceramic Chip Capacitors

May 23, 2024
Simple Model

Commercial Grade, General (Up to 75V) / C1608 series (10/10)

Circuit Diagram



Circuit Parameters

Part No.	C1[pF]	L1[nH]	R1[ohm]	R2[Gohm]
C1608X5R1C685M080AB	6,800,000	0.420	0.0045	0.0140
C1608X5R1A685K080AC	6,800,000	0.420	0.0041	0.0140
C1608X5R1A685M080AC	6,800,000	0.420	0.0041	0.0140
C1608X5R0J685K080AB	6,800,000	0.420	0.0041	0.0140
C1608X5R0J685M080AB	6,800,000	0.420	0.0041	0.0140
C1608X6S1A685K080AC	6,800,000	0.420	0.0045	0.0140
C1608X6S1A685M080AC	6,800,000	0.420	0.0045	0.0140
C1608X6S0J685K080AB	6,800,000	0.420	0.0045	0.0140
C1608X6S0J685M080AB	6,800,000	0.420	0.0045	0.0140
C1608X6S0G685K080AC	6,800,000	0.420	0.0041	0.0140
C1608X6S0G685M080AC	6,800,000	0.420	0.0041	0.0140
C1608X7S0J685K080AC	6,800,000	0.420	0.0045	0.0140
C1608X7S0J685M080AC	6,800,000	0.420	0.0045	0.0140
C1608X7S0G685K080AB	6,800,000	0.420	0.0045	0.0140
C1608X7S0G685M080AB	6,800,000	0.420	0.0045	0.0140
C1608X5R1E106M080AC	10,000,000	0.420	0.0051	0.0100
C1608X5R1C106M080AB	10,000,000	0.420	0.0051	0.0100
C1608X5R1A106K080AC	10,000,000	0.420	0.0051	0.0100
C1608X5R1A106M080AC	10,000,000	0.420	0.0051	0.0100
C1608X5R0J106K080AB	10,000,000	0.420	0.0051	0.0100
C1608X5R0J106M080AB	10,000,000	0.420	0.0051	0.0100
C1608X6S1A106M080AC	10,000,000	0.420	0.0051	0.0100
C1608X6S0J106M080AC	10,000,000	0.420	0.0051	0.0100
C1608X6S0G106K080AB	10,000,000	0.420	0.0051	0.0100
C1608X6S0G106M080AC	10,000,000	0.420	0.0051	0.0100
C1608X7S0J106M080AC	10,000,000	0.420	0.0051	0.0100
C1608X7S0G106M080AB	10,000,000	0.420	0.0051	0.0100
C1608X5R1A156M080AC	15,000,000	0.420	0.0067	0.00600
C1608X5R0J156M080AC	15,000,000	0.420	0.0067	0.00600
C1608X5R0G156M080AA	15,000,000	0.420	0.0067	0.00600
C1608X5R1A226M080AC	22,000,000	0.420	0.0039	0.00400
C1608X5R0J226M080AC	22,000,000	0.420	0.0039	0.00400
C1608X5R0G226M080AA	22,000,000	0.420	0.0039	0.00400
C1608X6S0G226M080AC	22,000,000	0.420	0.0043	0.00400