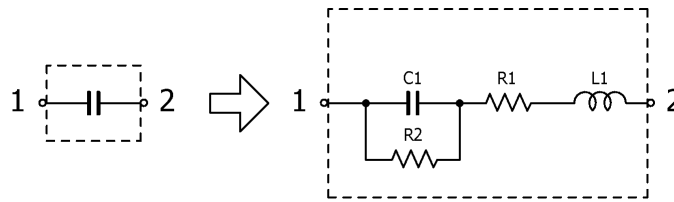


Multilayer Ceramic Chip Capacitors

June 29, 2015
Simple Model

High Reliability Grade (General (Up to 50V)) / CGJ3 series (1/3)

Circuit Diagram



Circuit Parameters

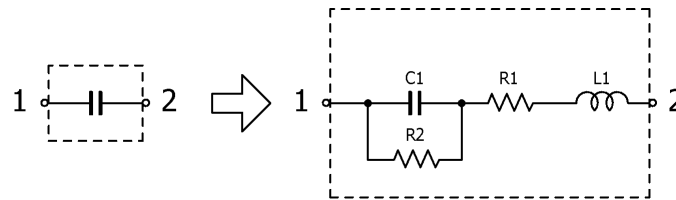
Part No.	C1[pF]	L1[nH]	R1[ohm]	R2[Gohm]
CGJ3E2C0G1H010C080AA	1	0.420	0.9827	10.0
CGJ3E2C0G1H1R5C080AA	1.5	0.420	1.2185	10.0
CGJ3E2C0G1H020C080AA	2	0.420	0.9188	10.0
CGJ3E2C0G1H2R2C080AA	2.2	0.420	0.6028	10.0
CGJ3E2C0G1H030C080AA	3	0.420	0.7233	10.0
CGJ3E2C0G1H3R3C080AA	3.3	0.420	0.4953	10.0
CGJ3E2C0G1H040C080AA	4	0.420	0.5992	10.0
CGJ3E2C0G1H4R7C080AA	4.7	0.420	0.3666	10.0
CGJ3E2C0G1H050C080AA	5	0.420	0.3921	10.0
CGJ3E2C0G1H060D080AA	6	0.420	0.3985	10.0
CGJ3E2C0G1H6R8D080AA	6.8	0.420	0.3038	10.0
CGJ3E2C0G1H070D080AA	7	0.420	0.4918	10.0
CGJ3E2C0G1H080D080AA	8	0.420	0.3141	10.0
CGJ3E2C0G1H090D080AA	9	0.420	0.4633	10.0
CGJ3E2C0G1H100D080AA	10	0.420	0.3084	10.0
CGJ3E2C0G1H120J080AA	12	0.420	0.6259	10.0
CGJ3E2C0G1H150J080AA	15	0.420	0.4851	10.0
CGJ3E2C0G1H180J080AA	18	0.420	0.4427	10.0
CGJ3E2C0G1H220J080AA	22	0.420	0.4318	10.0
CGJ3E2C0G1H270J080AA	27	0.420	0.4309	10.0
CGJ3E2C0G1H330J080AA	33	0.420	0.3702	10.0
CGJ3E2C0G1H390J080AA	39	0.420	0.1883	10.0
CGJ3E2C0G1H470J080AA	47	0.420	0.1494	10.0
CGJ3E2C0G1H560J080AA	56	0.420	0.1233	10.0
CGJ3E2C0G1H680J080AA	68	0.420	0.1263	10.0
CGJ3E2C0G1H820J080AA	82	0.420	0.1258	10.0
CGJ3E2C0G1H101J080AA	100	0.420	0.1402	10.0
CGJ3E2C0G1H121J080AA	120	0.420	0.0795	10.0
CGJ3E2C0G1H151J080AA	150	0.420	0.0807	10.0
CGJ3E2C0G1H181J080AA	180	0.420	0.0659	10.0
CGJ3E2C0G1H221J080AA	220	0.420	0.0681	10.0
CGJ3E2C0G1H271J080AA	270	0.420	0.0834	10.0
CGJ3E2C0G1H331J080AA	330	0.420	0.0770	10.0
CGJ3E2C0G1H391J080AA	390	0.420	0.0602	10.0
CGJ3E2C0G1H471J080AA	470	0.420	0.0560	10.0
CGJ3E2C0G1H561J080AA	560	0.420	0.0566	10.0
CGJ3E2C0G1H681J080AA	680	0.420	0.0473	10.0

Multilayer Ceramic Chip Capacitors

June 29, 2015
Simple Model

High Reliability Grade (General (Up to 50V)) / CGJ3 series (2/3)

Circuit Diagram



Circuit Parameters

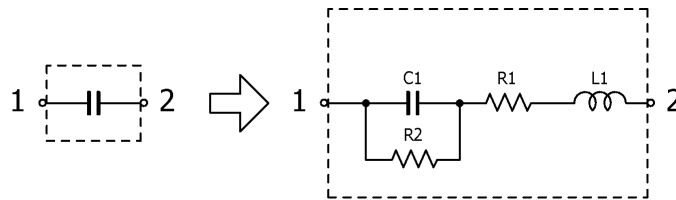
Part No.	C1[pF]	L1[nH]	R1[ohm]	R2[Gohm]
CGJ3E2C0G1H821J080AA	820	0.420	0.0380	10.0
CGJ3E2C0G1H102J080AA	1,000	0.420	0.0396	10.0
CGJ3E2C0G1H122J080AA	1,200	0.420	0.0366	10.0
CGJ3E2C0G1H152J080AA	1,500	0.420	0.0284	10.0
CGJ3E2C0G1H182J080AA	1,800	0.420	0.0256	10.0
CGJ3E2C0G1H222J080AA	2,200	0.420	0.0310	10.0
CGJ3E2C0G1H272J080AA	2,700	0.420	0.0249	10.0
CGJ3E2C0G1H332J080AA	3,300	0.420	0.0218	10.0
CGJ3E2C0G1H392J080AA	3,900	0.420	0.0233	10.0
CGJ3E2C0G1H472J080AA	4,700	0.420	0.0255	10.0
CGJ3E2C0G1H562J080AA	5,600	0.420	0.0263	10.0
CGJ3E2C0G1H682J080AA	6,800	0.420	0.0173	10.0
CGJ3E2C0G1H822J080AA	8,200	0.420	0.0237	10.0
CGJ3E2C0G1H103J080AA	10,000	0.420	0.0160	10.0
CGJ3E2X7R1H103K080AA	10,000	0.420	0.0538	10.0
CGJ3E2X7R1E103K080AA	10,000	0.420	0.0538	10.0
CGJ3E2X7R1C103K080AA	10,000	0.420	0.0538	10.0
CGJ3E2X7R1H153K080AA	15,000	0.420	0.0462	10.0
CGJ3E2X7R1E153K080AA	15,000	0.420	0.0462	10.0
CGJ3E2X7R1C153K080AA	15,000	0.420	0.0462	6.67
CGJ3E2X7R1H223K080AA	22,000	0.420	0.0377	10.0
CGJ3E2X7R1E223K080AA	22,000	0.420	0.0377	10.0
CGJ3E2X7R1C223K080AA	22,000	0.420	0.0377	4.55
CGJ3E2X7R1H333K080AA	33,000	0.420	0.0294	10.0
CGJ3E2X7R1E333K080AA	33,000	0.420	0.0294	10.0
CGJ3E2X7R1C333K080AA	33,000	0.420	0.0294	3.03
CGJ3E2X7R1H473K080AA	47,000	0.420	0.0232	10.0
CGJ3E2X7R1E473K080AA	47,000	0.420	0.0232	10.0
CGJ3E2X7R1C473K080AA	47,000	0.420	0.0232	2.13
CGJ3E2X7R1H683K080AA	68,000	0.420	0.0186	7.35
CGJ3E2X7R1E683K080AA	68,000	0.420	0.0186	7.35
CGJ3E2X7R1C683K080AA	68,000	0.420	0.0186	1.47
CGJ3E2X7R1H104K080AA	100,000	0.420	0.0163	5.00
CGJ3E2X7R1E104K080AA	100,000	0.420	0.0163	5.00
CGJ3E2X7R1C104K080AA	100,000	0.420	0.0163	1.00
CGJ3E3X7R1H154K080AB	150,000	0.420	0.0163	3.33
CGJ3E2X7R1E154K080AA	150,000	0.420	0.0131	3.33

Multilayer Ceramic Chip Capacitors

June 29, 2015
Simple Model

High Reliability Grade (General (Up to 50V)) / CGJ3 series (3/3)

Circuit Diagram



Circuit Parameters

Part No.	C1[pF]	L1[nH]	R1[ohm]	R2[Gohm]
CGJ3E2X7R1C154K080AA	150,000	0.420	0.0131	0.666
CGJ3E3X7R1H224K080AB	220,000	0.420	0.0128	2.27
CGJ3E2X7R1E224K080AA	220,000	0.420	0.0125	2.27
CGJ3E2X7R1C224K080AA	220,000	0.420	0.0125	0.454
CGJ3E3X7R1E334K080AB	330,000	0.420	0.0106	1.52
CGJ3E2X7R1C334K080AA	330,000	0.420	0.0112	0.303
CGJ3E2X7R1A334K080AA	330,000	0.420	0.0128	0.303
CGJ3E2X7R0J334K080AA	330,000	0.420	0.0128	0.303
CGJ3E3X7R1E474K080AB	470,000	0.420	0.0093	1.06
CGJ3E2X7R1C474K080AA	470,000	0.420	0.0070	0.212
CGJ3E2X7R1A474K080AA	470,000	0.420	0.0093	0.212
CGJ3E2X7R0J474K080AA	470,000	0.420	0.0093	0.212
CGJ3E1X7R1E684K080AC	680,000	0.420	0.0067	0.735
CGJ3E3X7R1C684K080AB	680,000	0.420	0.0082	0.147
CGJ3E2X7R1A684K080AA	680,000	0.420	0.0067	0.147
CGJ3E2X7R0J684K080AA	680,000	0.420	0.0067	0.147
CGJ3E1X7R1E105K080AC	1,000,000	0.420	0.0056	0.500
CGJ3E3X7R1C105K080AB	1,000,000	0.420	0.0057	0.100
CGJ3E2X7R1A105K080AA	1,000,000	0.420	0.0056	0.100
CGJ3E2X7R0J105K080AA	1,000,000	0.420	0.0056	0.100
CGJ3E1X7R0J155K080AC	1,500,000	0.420	0.0050	0.0660
CGJ3E1X7R0J225K080AC	2,200,000	0.420	0.0043	0.0450