

Attracting Tomorrow

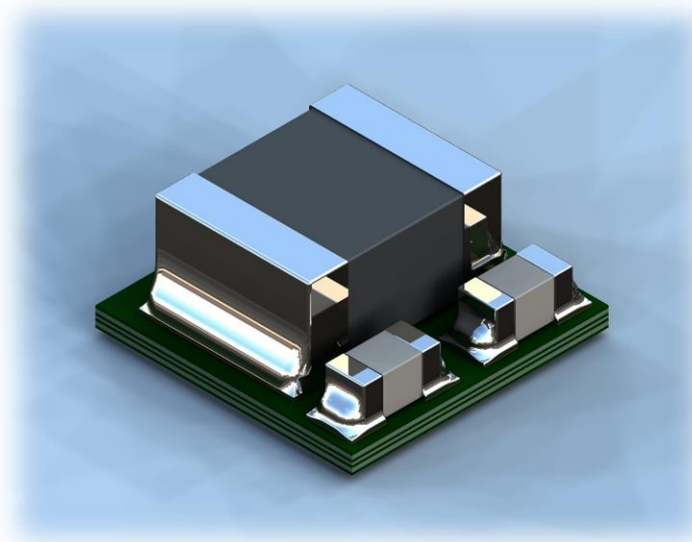


μ POL™ Technology

State of the Art DC/DC Converter

Chip Embedded Power Modules

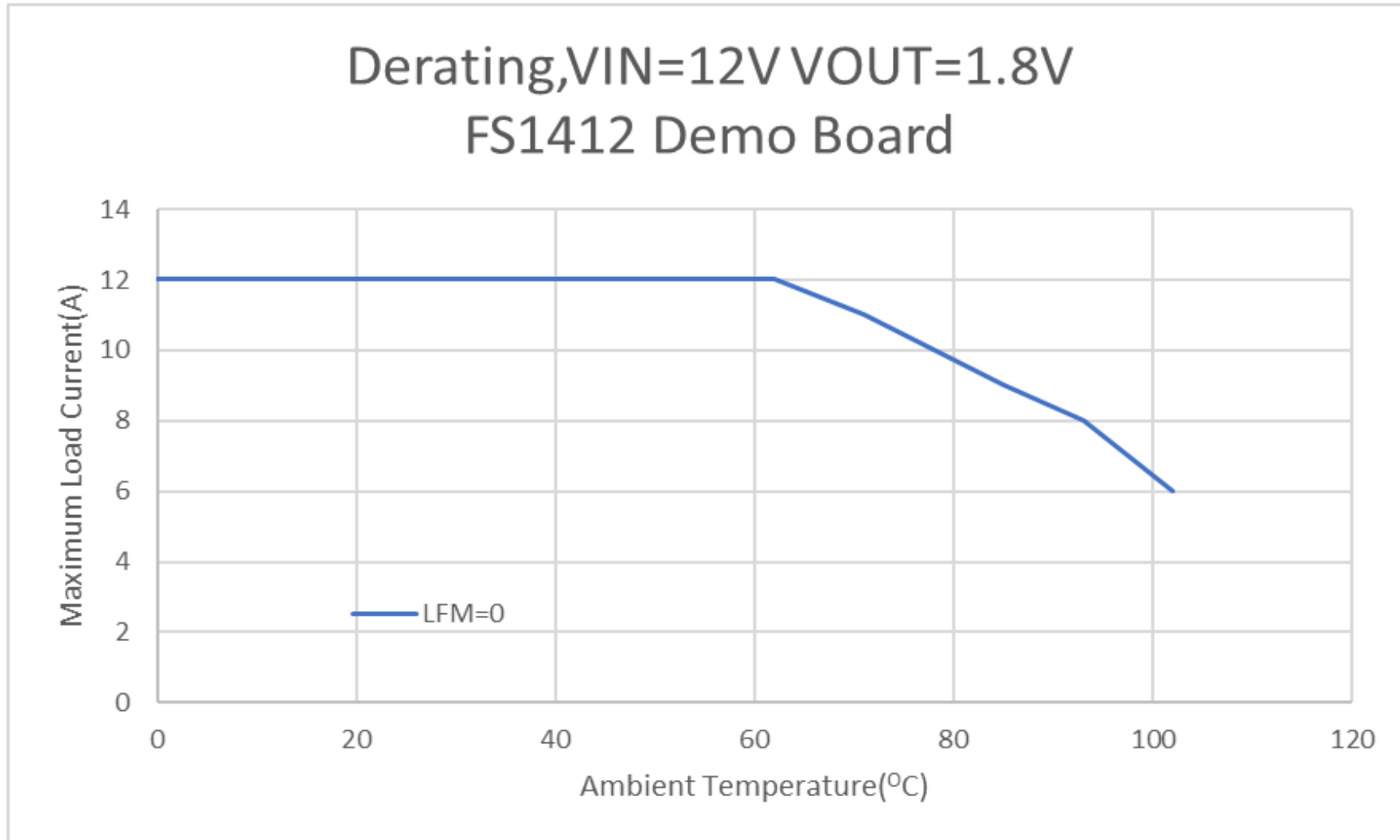
FS1412 Derating Performance



Faradaysemi
A Group Company
Communication Devices Business Group
Feb 2021

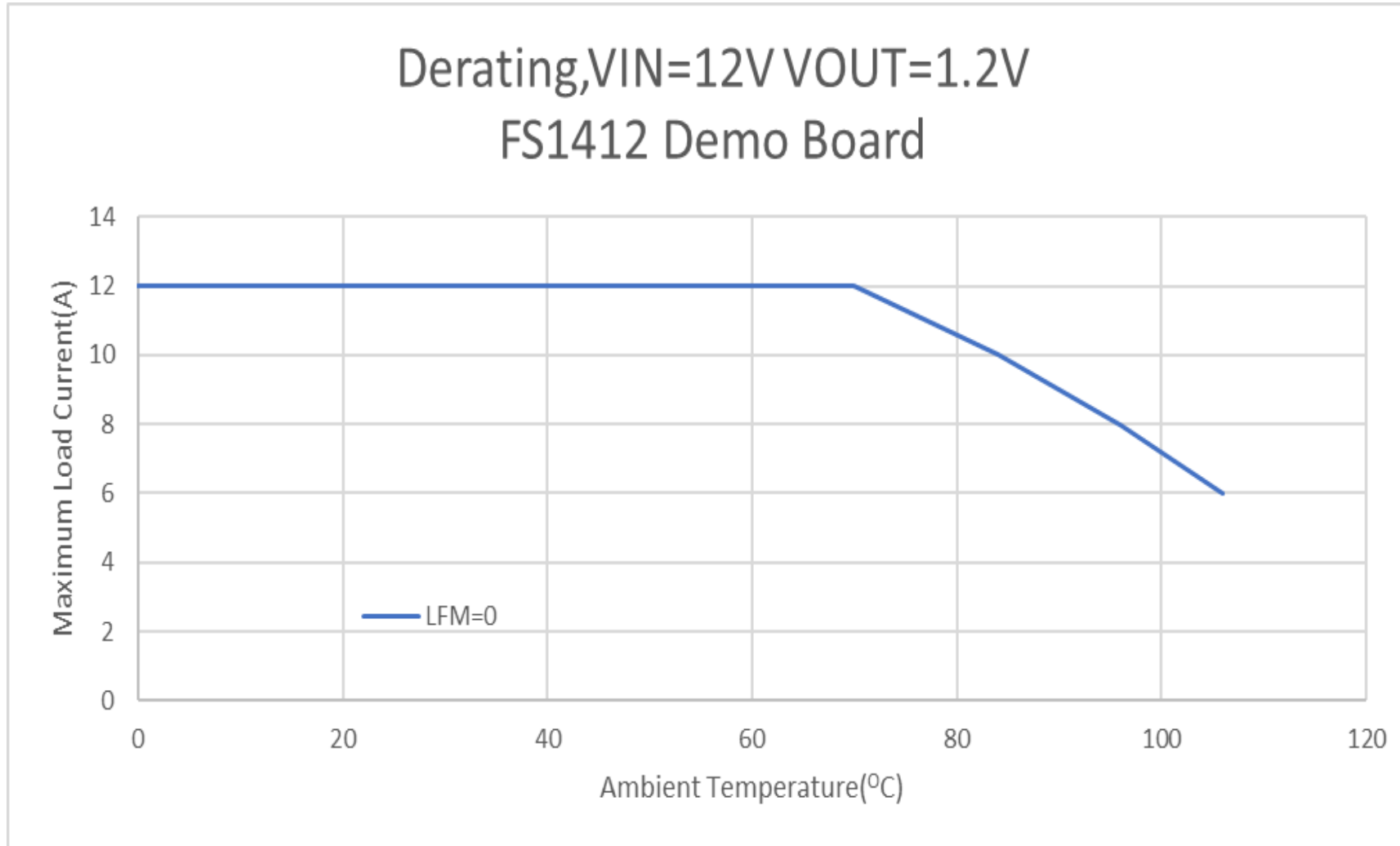


De-Rating Curves, FS1412



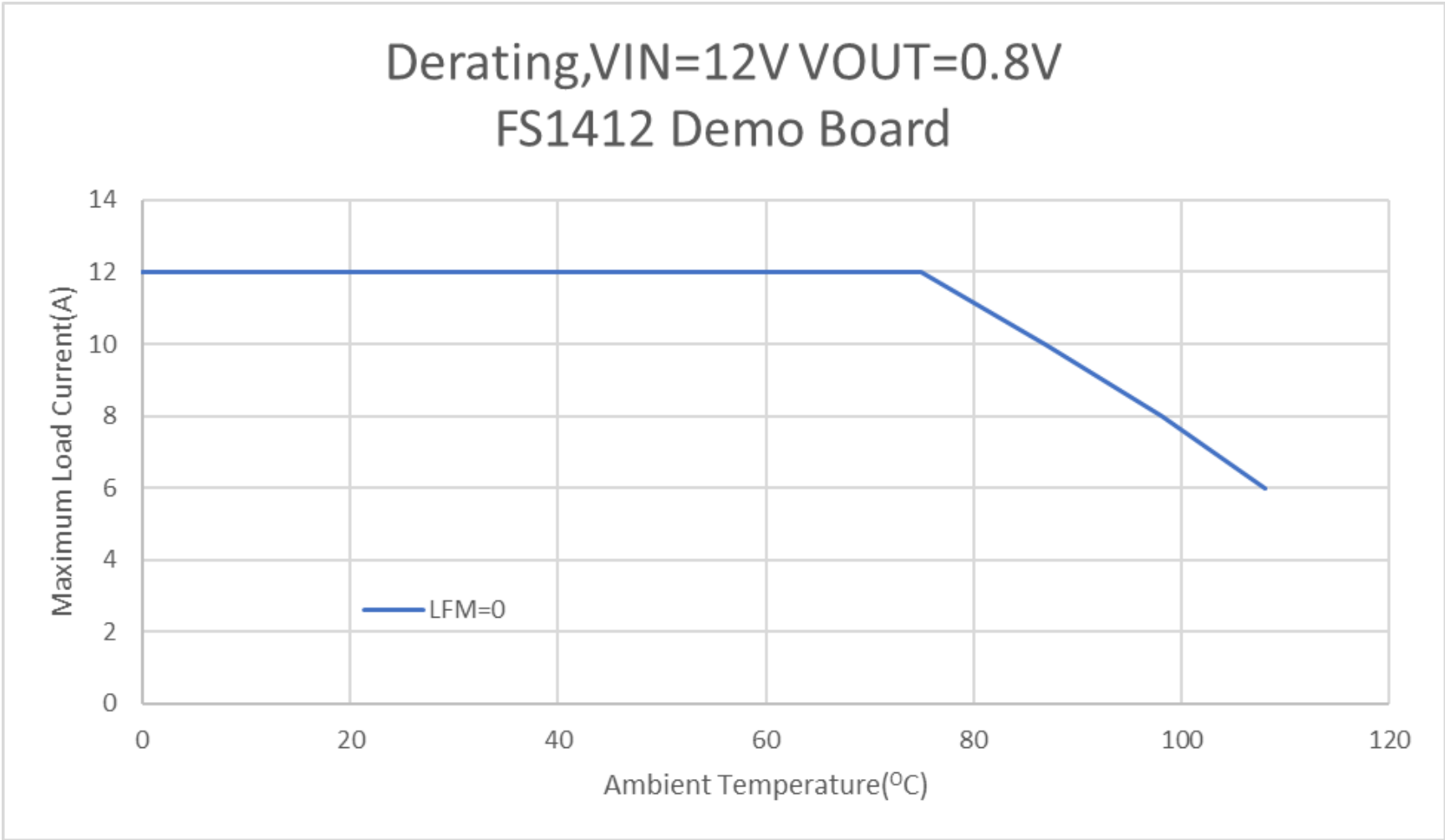
Test Condition: The module temp is monitored and it is kept at or below 125°C while increasing the Ambient temp.

De-Rating Curves, FS1412



Test Condition: The module temp is monitored and it is kept at or below 125°C while increasing the Ambient temp.

De-Rating Curves, FS1412



Test Condition: The module temp is monitored and it is kept at or below 125°C while increasing the Ambient temp.

